

ArcGIS Online Activity Space Map Instructions

Goals:

1. To understand the concept of an activity space.
2. To create a digital map using a Geographic Information System (GIS).

An Activity Space map highlights the locations, routes and regions that are part of your regular routine; the places where you spend time on a daily or weekly basis, sometimes called your “circle of travel”. Here is a sample Activity Space map that you can use for guidance, but yours will be unique to you!

<http://arcg.is/1uyOS1>

Preparation

1. Begin by creating an ArcGIS Online Public Account (see separate handout).
2. Next, make a list of at least 10 locations that you frequent. For example, your home, school, work, church, homes of friends and relatives, places where you shop, eat out, go for fun, etc. These should not be places that you have only visited once. They should be part of your daily or weekly routine. You will be mapping these locations as your Activity Space.

Checklist (Your Map Will Include These Items When You Are Finished)

- _____ 10 or more locations (points, lines or areas) with titles, symbols and descriptions
- _____ At least 1 location is a line (route)
- _____ At least 1 image is linked to a point, line or area
- _____ A colored, transparent polygon outlining the perimeter of your activity space titled My Activity Space (you will do this last)
- _____ Correct capitalization and spelling - remember place names are capitalized
- _____ Map correctly saved and shared

To Make the Map

1. Go to <https://www.arcgis.com/index.html>
2. Sign in with Google or whichever method you used to create your ArcGIS Online Public Account (see separate handout).

Sign in with



ArcGIS login

Username

Password

☐ Keep me signed in

Sign In

[Forgot username?](#) or [Forgot password?](#)

Enterprise login

Facebook Google

No account? [Create an account](#)

3. Select Map (top of window)

ArcGIS

Overview

Pricing

Map

Scene

Groups

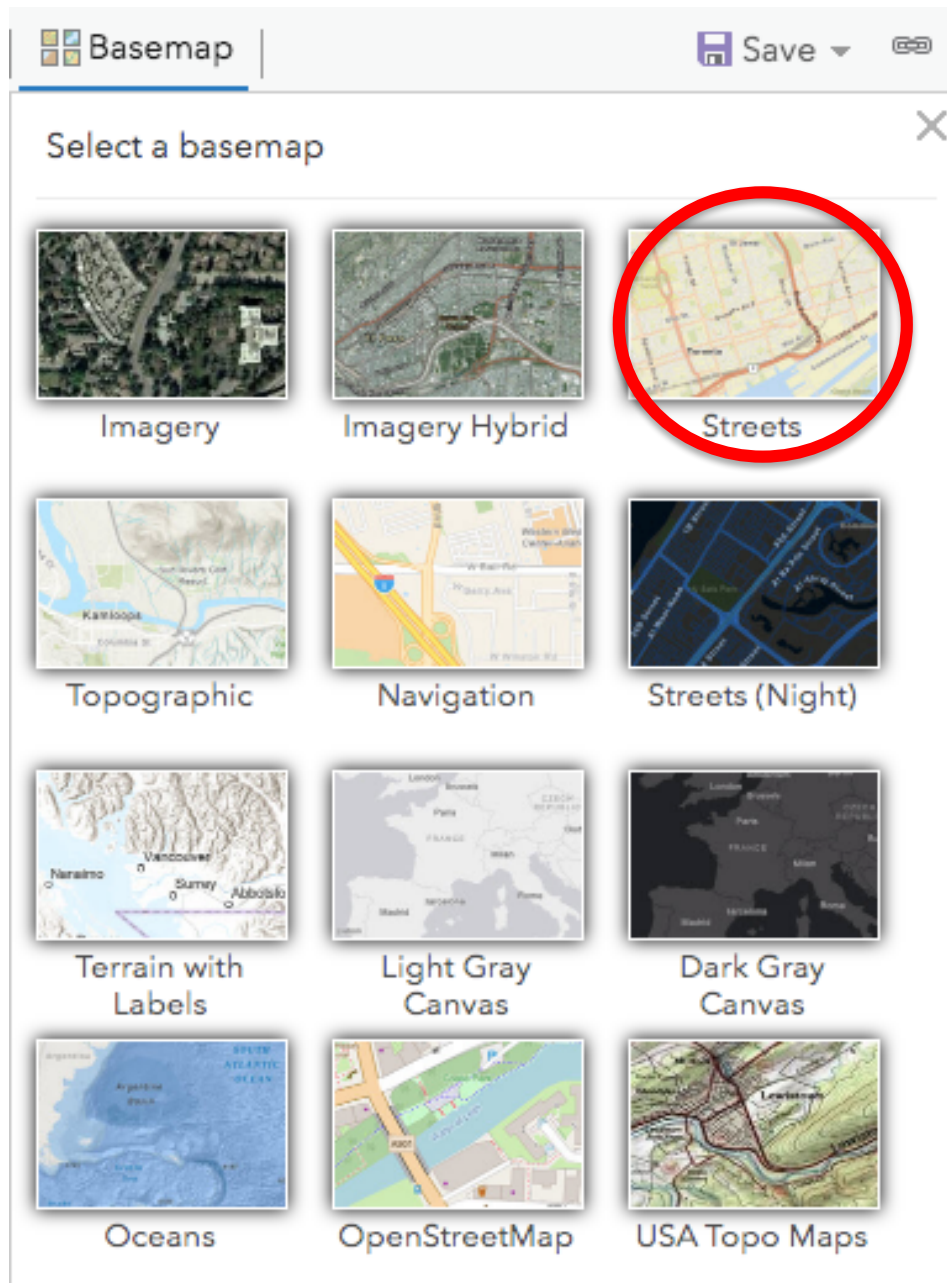
Content

FYI: To return to your map later after you have signed out, sign in and select Content.

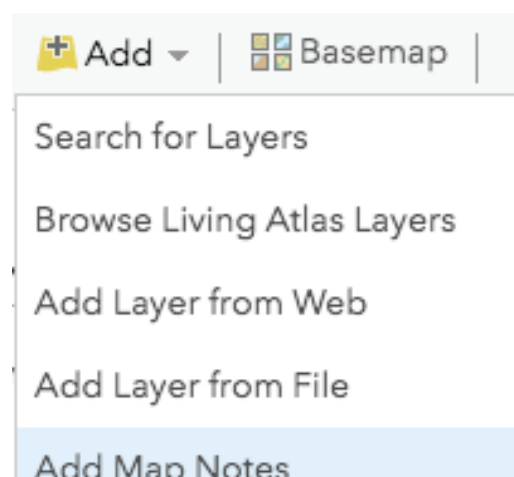
4. In the Find address or place box, type Gaborone, Botswana (or the name of your hometown) and return.

Find address or place

5. Select an appropriate Basemap from the Basemap Gallery. Streets is a good one to start with. You can always change this later if you want to.



6. Use the Find address or place box and /or zoom and pan to the first location on your list of 10 locations. Then, on the left side of the window, select Add and Add Map Notes.



7. Name your first Map Note using the proper name of your first location and then select CREATE. Be sure to capitalize and spell correctly. Here's a sample:

×

Add Map Notes

Name:

Template:

Use Map Notes to create basic shapes in a wide variety of applications.

8. Click the Stickpin, drag it to your first location and click the mouse. A window will open. Type an appropriate title and description. Be sure to capitalize and spell correctly. Note you can also add links within the description. Here's a sample:

Points

Title

Description

B *I* U A Aa |

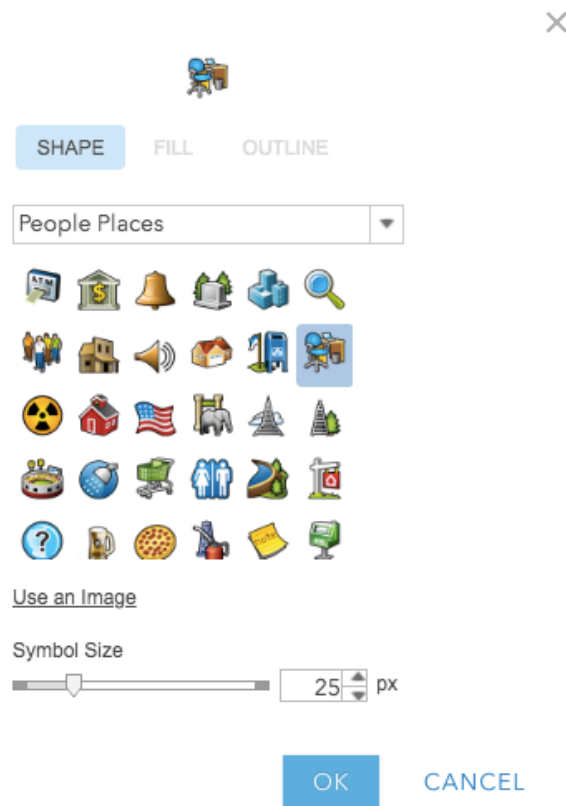
I audited a Population Studies class and had office space at the [University of Botswana.](#)

Image URL

Image Link URL

9. Now, change the symbol. To do this, click CHANGE SYMBOL. You will see a pull-down menu from which you can select many different types of symbols.

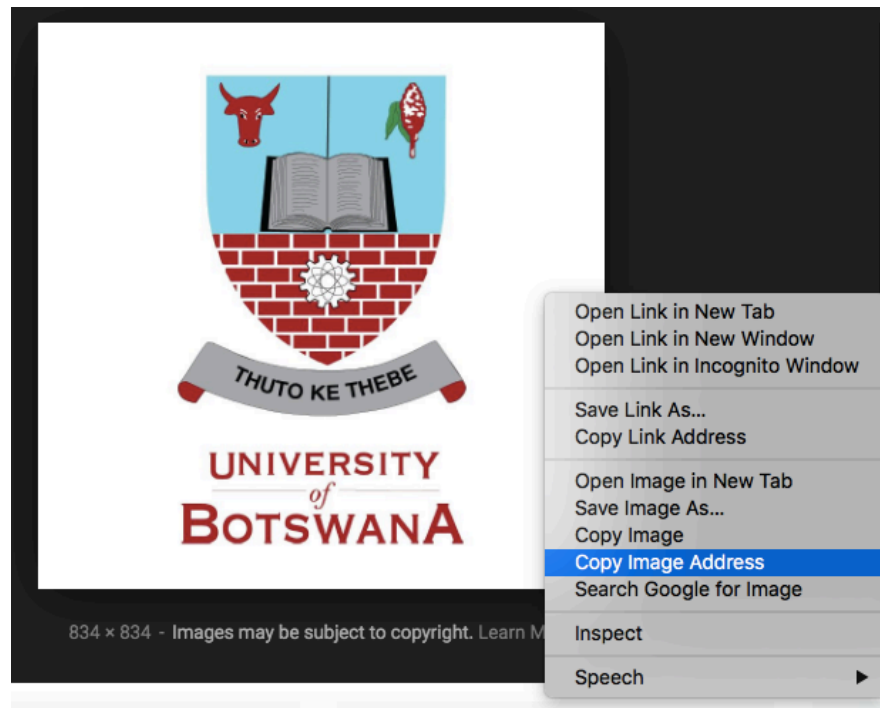
Here's a sample: I selected People Places and the desk and chair for my first point. Notice how I can change the symbol size at the bottom of the window. Click OK when you are finished choosing a symbol.



10. Now add an image to your first point. The image MUST be one found on the Internet.

Here's a sample: Using a Google image search, I found an image of the University of Botswana logo that I am going to link to my first point.

After locating the image, hold down the Control key and click on the image itself until you see the menu. Select Copy Image Address.



Copy and paste the image address to the Image URL box in ArcGIS Online. **Be sure you do not have more than one http:/ or https:/ at the beginning of the Image URL. This is the most common source of problems with adding images.** Click CLOSE.

Points

Title: University of Botswana

Description: I audited a Population Studies class and had office space at the [University of Botswana.](https://pbs.twimg.com/profile_images/99881514862)

Image URL: https://pbs.twimg.com/profile_images/99881514862

Image Link URL: https://

DELETE CHANGE SYMBOL CLOSE

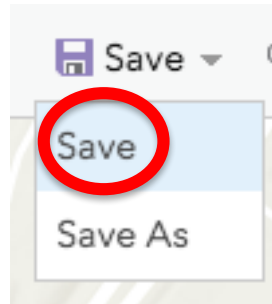


11. To check and see if the Map Note works, click the small arrow at the top left of the window to leave the editing mode, then click on the Map Note on the map itself.

Add Features



12. Now is a good time to save your map before continuing on. It will not auto-save!



Save your map as you wish. Here is a sample format that I use with my students:

Title: classhour_lastnamefirstinitial_activityspace

Tags: activityspace

Save Map



Title:

Tags:

Summary:

Save in folder:

SAVE MAP

CANCEL

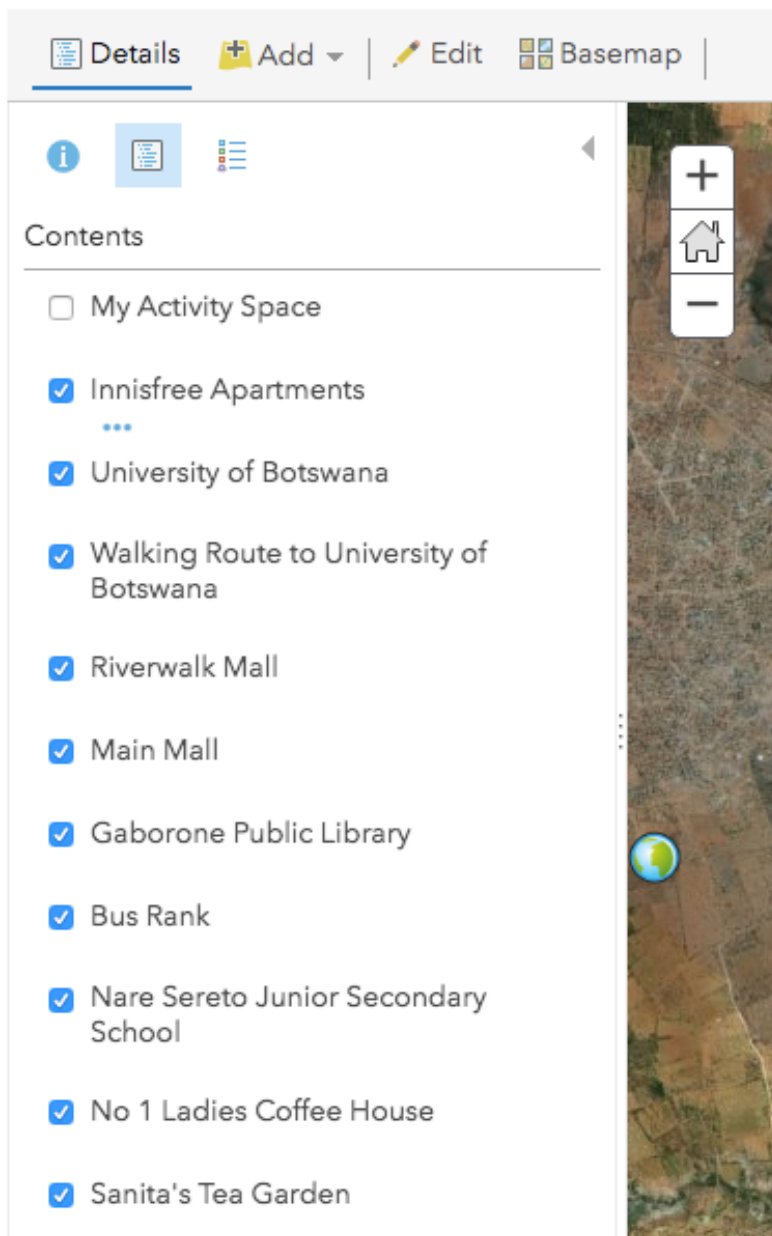
Use your name, not mine!

13. Repeat the process of adding Map Notes until you have added your 10 locations. You must add separate Map Notes for each item so that you can see each separate item in the Table of Contents. Remember the requirements:

Checklist (Your Map Will Include These Items When You Are Finished)

- _____ 10 or more locations (points, lines or areas) with titles, symbols and descriptions
- _____ At least 1 location is a line (route)
- _____ At least 1 image is linked to a point, line or area
- _____ A colored, transparent polygon outlining the perimeter of your activity space titled My Activity Space (you will do this last)
- _____ Correct capitalization and spelling - remember place names are capitalized
- _____ Map correctly saved and submitted to your teacher

ArcGIS ▾ damons_activityspacemap ✎



Does your Table of Contents have a separate layer for each of your ten locations? If not, you have not created a separate Map Note for each location and you should go back and do this.

14. Save your map frequently. It will not auto-save.

FYI: To return to your map later after you have signed out, sign in and select Content.

15. One of your Map Notes should be a line feature. To add a line, use the same process of creating a Map Note, but instead of choosing the stickpin, choose the Line or Freehand Line. Click once to begin the line and click twice to end the line.

16. Your last Map Note will be a colored, transparent polygon that shows the boundaries of your Activity Space. To do this, zoom out until you can see your entire Activity Space. Add a Map Note named My Activity Space as an Area (Area, Triangle or Rectangle), click Change Symbol, then edit the Fill, Outline, and Transparency of the area so that it is transparent.

Add Map Notes

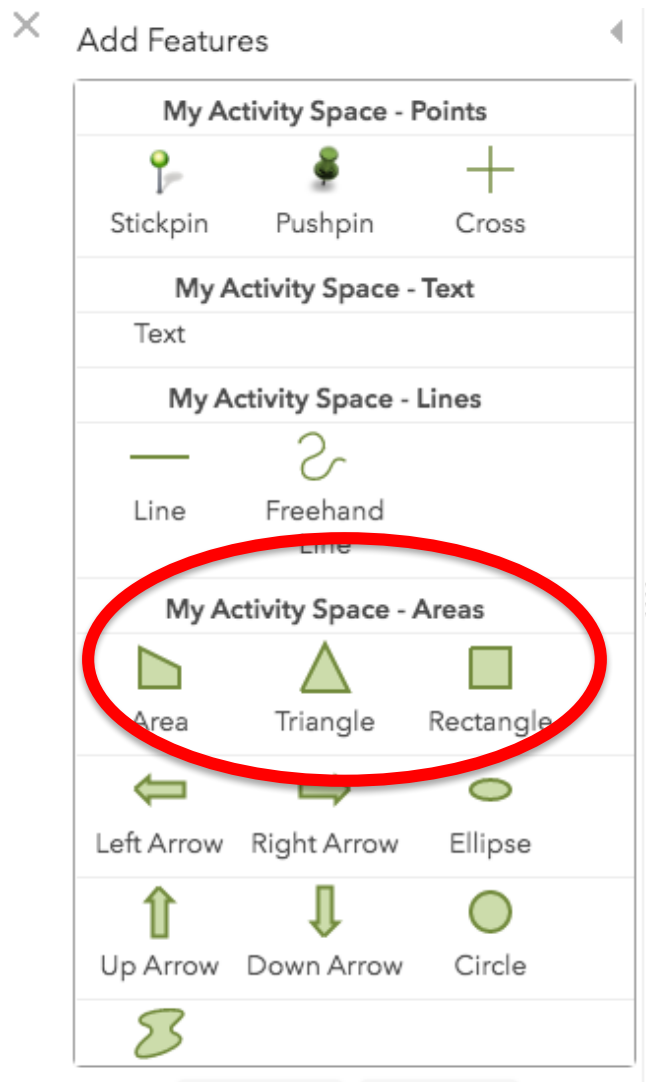
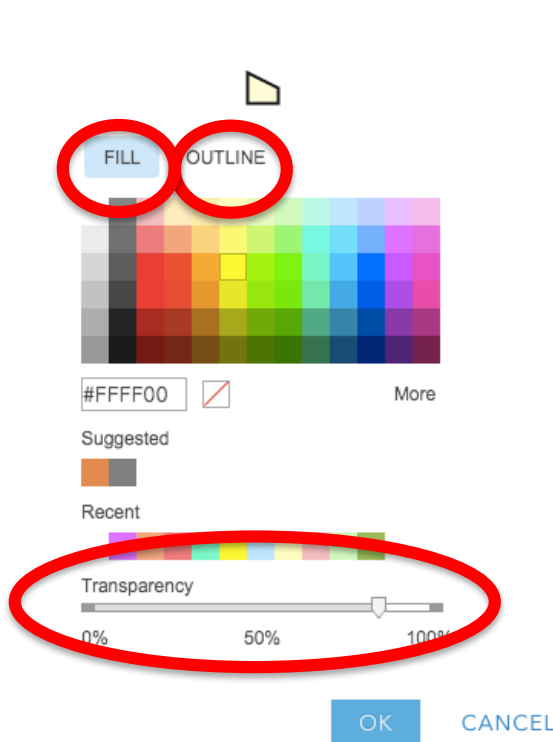
Name:

Template:

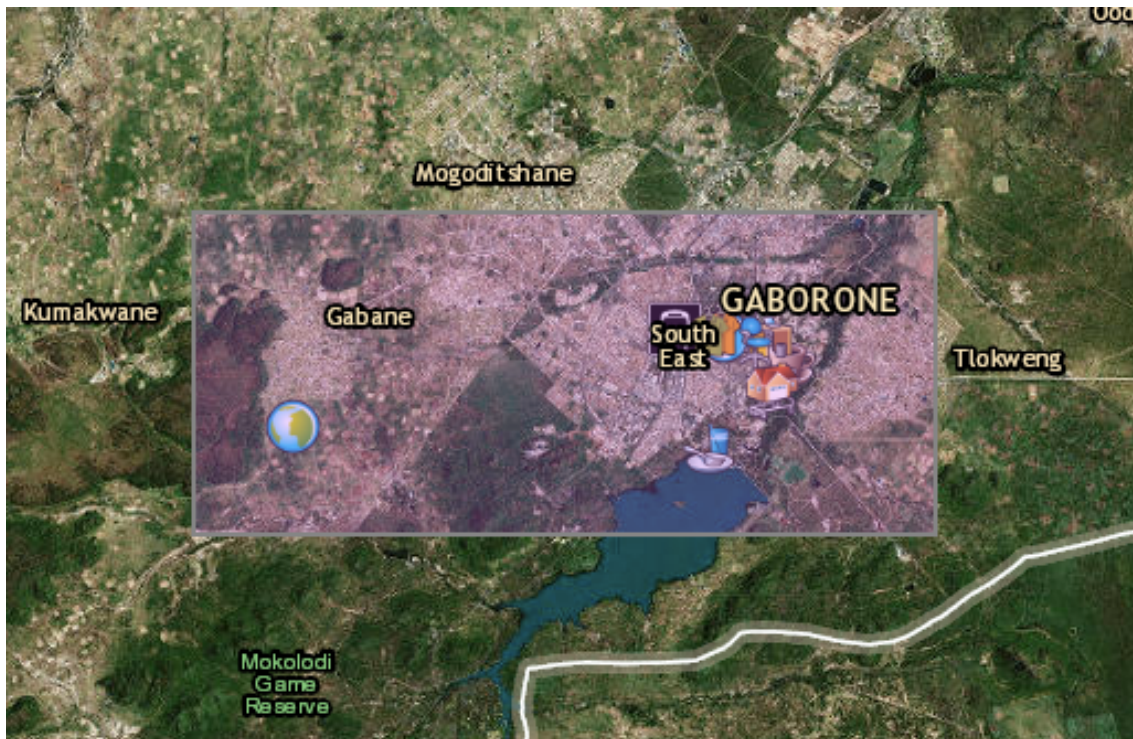
Use Map Notes to create basic shapes in a wide variety of applications.

CREATE

CANCEL



Here's a sample polygon:



16. Before you share your map with others:

- Be sure you have separate Map Notes for each location. Your Table of Contents should show each separate location.
- Be sure you have added your Activity Space as a colored, transparent polygon.
- Be sure your Activity Space is nicely centered on the map. Zoom to a level that shows your Activity Space and a bit of the surrounding area.
- Decide whether or not you want to change the Basemap. If so, do that.
- Proofread every element of your map to make sure that there are no spelling or grammatical errors. Place names should be capitalized.
- Save your map one last time.

17. Did you save your map one last time? ☺ After saving, select Share at the top of the window. **Click the box in front of Everyone (public)**, then copy the link and share your map with others.

Share

Choose who can view this map.

Your map is currently shared with these people.

☒ Everyone (public)

Link to this map

<http://arcg.is/4iTK9>

☒ Share current map content

Facebook

Twitter

Embed this map

EMBED IN WEBSITE

CREATE A WEB APP