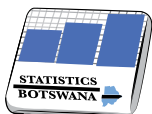




Selected Statistical Indicators 1966-2016

Enabling Stakeholders formulate policies, plan and make decisions.



STATISTICS BOTSWANA

Selected Statistical Indicators 1966 -2016

Published by

STATISTICS BOTSWANA
Private Bag 0024, Gaborone
Tel: 3671300 Fax: 3952201
E-mail: info@statsbots.org.bw
Website: www.statsbots.org.bw

Copyright © Statistics Botswana 2016



Preface

Statistics Botswana embarked on the production of this special publication on "Selected Statistical Indicators: 1966 – 2016" as part and contribution to Botswana's 50th anniversary of independence celebrations.

The main objective of this information is to enable statistics stakeholders to appreciate performance levels in different sectors over the 50 year period. Users are aware of the importance of statistics for evidence based decision making, policy formulation, planning, monitoring and evaluation of programmes hence assessment of performance over the period is critical.

Statistics Botswana is responsible for the collection, processing, analysis, dissemination and archiving of statistical information across the economy covering the economic, social, demographic and environmental sectors. As much as possible, the trends for some indicators go as far back as 1966. The generation of different indicators started in different periods and in some, the published data is not yet available, hence some gaps will be realised.

I encourage stakeholders to make use of this special publication. Should you require other detailed statistical indicators, I request you to visit the Statistics Botswana website (www.statsbots.org.bw) and explore different sector statistics reports.

On behalf of Management and staff of Statistics Botswana, I like to take this opportunity to wish you good celebrations as we mark this important milestone in the history of Botswana, Our 50 years of Independence.

Thank you.



Anna N. Majelantle
Statistician General

September 2016

Contents Page

Consumer Price Statistics

Chart 1: Consumer Price Index from 1970 to 2015.....	9
Chart 2: Price movement of soft drinks over 1991 to 2016.....	10
Table 1: Annual Inflation Rate (Percentage) & Consumer Price Index 1970 to 2015.....	11

National Accounts (Gross Domestic Product)

Chart 3: GDP at Current\Nominal Prices in Million Pula from 1964 to 2015.....	13
Chart 4: Value Added by kind of Economic Activity at Current Prices-Millions Pula-2015.....	14
Table 2: Gross Domestic Product at Current\Nominal Prices in Million Pula from 1964-2015.....	15
Table 3: Value added by kind of Economic Activity at Current Prices - Millions of pula (1965 to 2015).....	16

International Merchandise Trade Statistics

Chart 5: International Merchandise Trade Statistics in Million Pula from 1980 to 2015.....	18
Chart 6: International Merchandise Trade Statistics in Million Pula from 2000-2015.....	19
Table 4: Total International Merchandise Trade Statistics in Units of Accounts (1966 – 1979).....	20
Table 5: Total International Merchandise Trade Statistics in Millions of Pula (1980 – 2015).....	21
Table 6: Selected Principal Import & Export Commodity in Units of Accounts (1972-1979).....	22
Table 7: Selected Principal Import & Export Commodity in Millions of Pula (1980-2015).....	22

Production

Chart 7: Electricity Generation in Kilo Watt Hour (KWH) from 1985 to 2015.....	24
Chart 8: Livestock Population ('000) - (Traditional & Commercial).....	24
Table 8: Electricity Distribution in Kilo Watt Hour (KWH) from 1985-2015.....	25
Table 9: Mineral Production 1981 to 2015.....	26
Table 10: Livestock Population ('000) - (Traditional & Commercial) and Crop Production 1979-2014.....	27

Transport & Infrastructure

Chart 9: National Vehicle Stock (Total Registered Vehicles), 1966 – 2014.....	29
Chart 10: Registered Vehicle Trend, 1984 – 2014.....	29
Chart 11: Motor Vehicle Accident Trend, 1984–2014.....	30
Chart 12: Air Transport - Passenger Movements by Type, 1981 – 2014.....	30
Table 11: National Vehicle Stock (Total Registered Vehicles), 1966 – 2014.....	31
Table 12: Motor Vehicle Accident Trend, 1984–2014.....	32
Table 13: Length of Roads Maintained by the Central Government by Type (km), 1980-2014.....	33
Table 14: Air Transport - Aircraft and Passenger Movements by Type, 1981 – 2014.....	34
Table 15: Rail Goods Traffic by Direction (Net tonnes), 1980 – 2014.....	35

Environment & Climate

Table 16: Long term (annual) averages (Meteorological years July to June).....	37
Table 17: Aerial Censuses of Wildlife Population Estimates of Selected Species- National Level (2003, 2004 & 2012).....	38
Table 18: Population with Access to Safe Drinking Water by Urban and Rural Areas, (%), 1991 – 2013.....	39
Table 19: Population with Access to Improved Sanitation by Urban and Rural Areas, (%), 1991 – 2013.....	39

Tourism

Chart 13: Total Arrivals from 1995 to 2014.....	41
Table 20: Total arrivals from 1995-2014.....	42
Table 21: Tourists by type from 1998-2014.....	42

Information, Communication & Technology

Chart 14: Mobile Cellular Telephone Subscriptions per 100 Inhabitants, 2000-2014.....	44
Chart 15: Fixed Internet Subscriptions per 100 Inhabitants, 2000-2014.....	44
Table 22: ICT Indicators, 2000 – 2014.....	45

Population

Chart 16: Botswana Population, 1964-2021.....	47
Chart 17: 2001 Population Density by Administrative District.....	48
Chart 18: 2011 Population Density by Administrative District	49
Chart 19: 2001 Population Pyramid.....	50
Chart 20: 2011 Population Pyramid.....	50
Table 23: Population Distributions by District and Sex.....	51
Table 24: Population by Age & Sex.....	53
Table 25: Botswana Population Projections (2012 - 2016).....	54

Health & Vital Statistics

Chart 21: Number of Clinics and Doctors from 1994 to 2012.....	56
Chart 22: Marriage Trends (%) over the Past Five Censuses by gender.....	57
Table 26: Health Facilities 1968-2012.....	58
Table 27: Health Personnel 1994-2012.....	59
Table 28: Marriage Trends (%) over the Past Five Censuses by gender.....	60
Table 29: Vital Statistics 1971-2011.....	60
Table 30: Proportion of Orphans by Census Districts, 2001.....	61
Table 31: Proportion of Orphans by Census Districts, 2011.....	62

Education

Chart 23: Number of Secondary schools established from 1966 to 2013.....	64
Table 32: School Establishment from 1977-2008.....	65
Table 33: Number of Teachers/ Lecturers 1977-2008.....	66
Table 34: School Enrolment by Sex 1977- 2013.....	67
Table 35: Literacy Rates by Year, Age and Sex (1991-2014).....	68

Labour & Poverty Statistics

Chart 24: Unemployment rate during 1981,2004 & 2013 period.....	70
Table 36: Poverty Incidence (Percentage).....	71
Table 37: Trends in Total Labour Force and Unemployment Rate, 1981-2002/03.....	72
Table 38: Trends in Total Labour Force and Unemployment Rate, 1981-2004/13.....	73
Chart 25: 2001 Population & Housing Census - Trends in Total Labour Force and Unemployment Rate, by Age Group.....	74
Chart 26: 2011 Population & Housing Census- Trends in Total Labour Force and Unemployment Rate, by Age Group.....	74
Table 39: 2001 Population and Housing Census - Trends in Total Labour Force and Unemployment Rate, by Age Group	75
Table 40: 2002/03 Household Income and Expenditure Survey - Trends in Total Labour Force and Unemployment Rate, by Age Group	76
Table 41: 2004 Botswana AIDS Impact Survey II- Trends in Total Labour Force and Unemployment Rate, by Age Group	77
Table 42: 2005/06 Labour Force Survey - Trends in Total Labour Force and Unemployment Rate, by Age Group	78
Table 43: 2008 Botswana AIDS Impact Survey II- Trends in Total Labour Force and Unemployment Rate, by Age Group	79
Table 44: 2009/10 Botswana Core Welfare Indicator Survey - Trends in Total Labour Force and Unemployment Rate, by Age Group	80
Table 45: 2011 Population and Housing Census - Trends in Total Labour Force and Unemployment Rate, by Age Group	81
Table 46: 2013 Botswana AIDS Impact Survey II- Trends in Total Labour Force and Unemployment Rate, by Age Group	82

Consumer Price Statistics

1

Chart 1: Consumer Price Index from 1970 to 2015

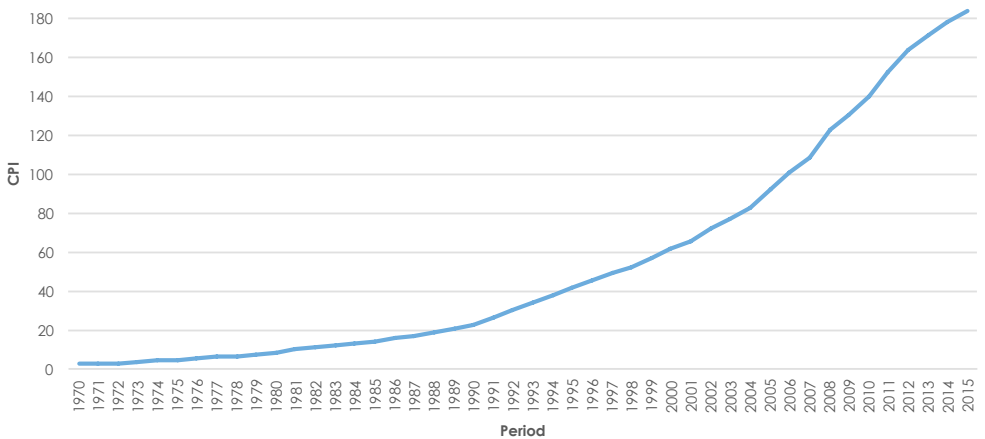


Chart 2: Price movement of soft drinks from 1991 to 2016

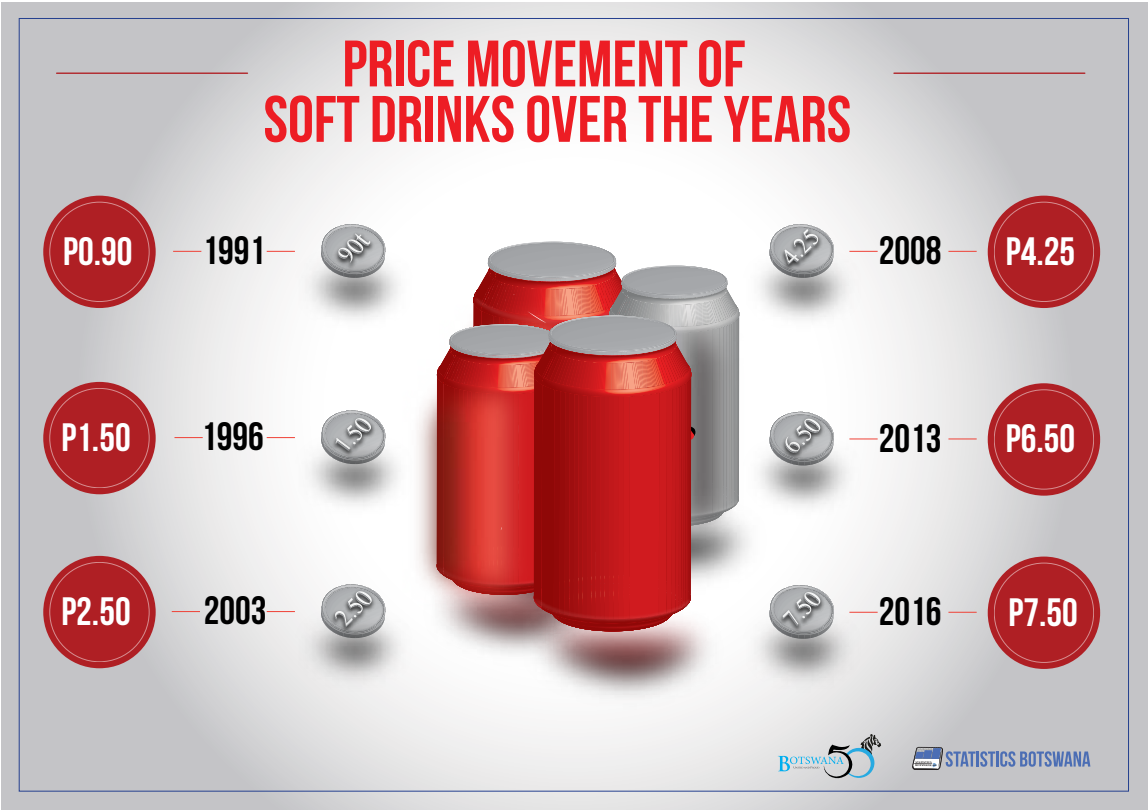


Table 1: Annual Inflation Rate (Percentage) and Consumer Price Index 1970 to 2015

Year	CPI	Rate
1970	2.7	0.3
1971	2.8	4.0
1972	3.0	5.6
1973	3.6	16.7
1974	4.3	18.1
1975	4.8	11.6
1976	5.4	13.4
1977	6.1	13.2
1978	6.6	9.1
1979	7.5	11.7
1980	8.5	13.8
1981	9.8	16.3
1982	11.0	11.2
1983	12.0	10.5
1984	12.9	8.6
1985	14.1	8.1
1986	15.5	10.0
1987	16.9	9.8
1988	18.6	8.4
1989	20.6	11.6
1990	23.0	11.4
1991	25.9	11.8
1992	30.2	16.1

Table 1: Annual Inflation Rate (Percentage) and Consumer Price Index 1970 to 2015 cont'd

Year	CPI	Rate
1993	34.2	14.4
1994	37.6	10.6
1995	41.6	10.5
1996	45.7	10.1
1997	49.4	8.9
1998	52.4	6.5
1999	57.0	7.8
2000	61.8	8.5
2001	65.4	6.6
2002	72.3	8.0
2003	77.0	9.2
2004	82.8	7.0
2005	91.9	8.6
2006	100.4	11.6
2007	107.9	7.1
2008	123.0	12.6
2009	130.6	8.2
2010	140.0	6.9
2011	152.5	8.5
2012	163.6	7.5
2013	170.9	5.9
2014	178.1	4.4
2015	183.5	3.0

National Accounts

2

Chart 3: GDP at Current/Nominal Prices in Million Pula from 1964 to 2015

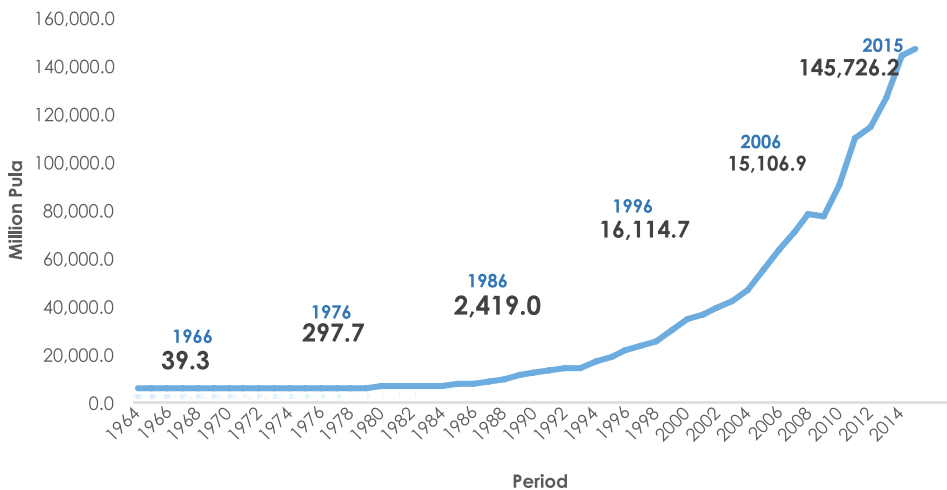


Chart 4: Value Added by kind of Economic Activity at Current Prices- Millions Pula-2015

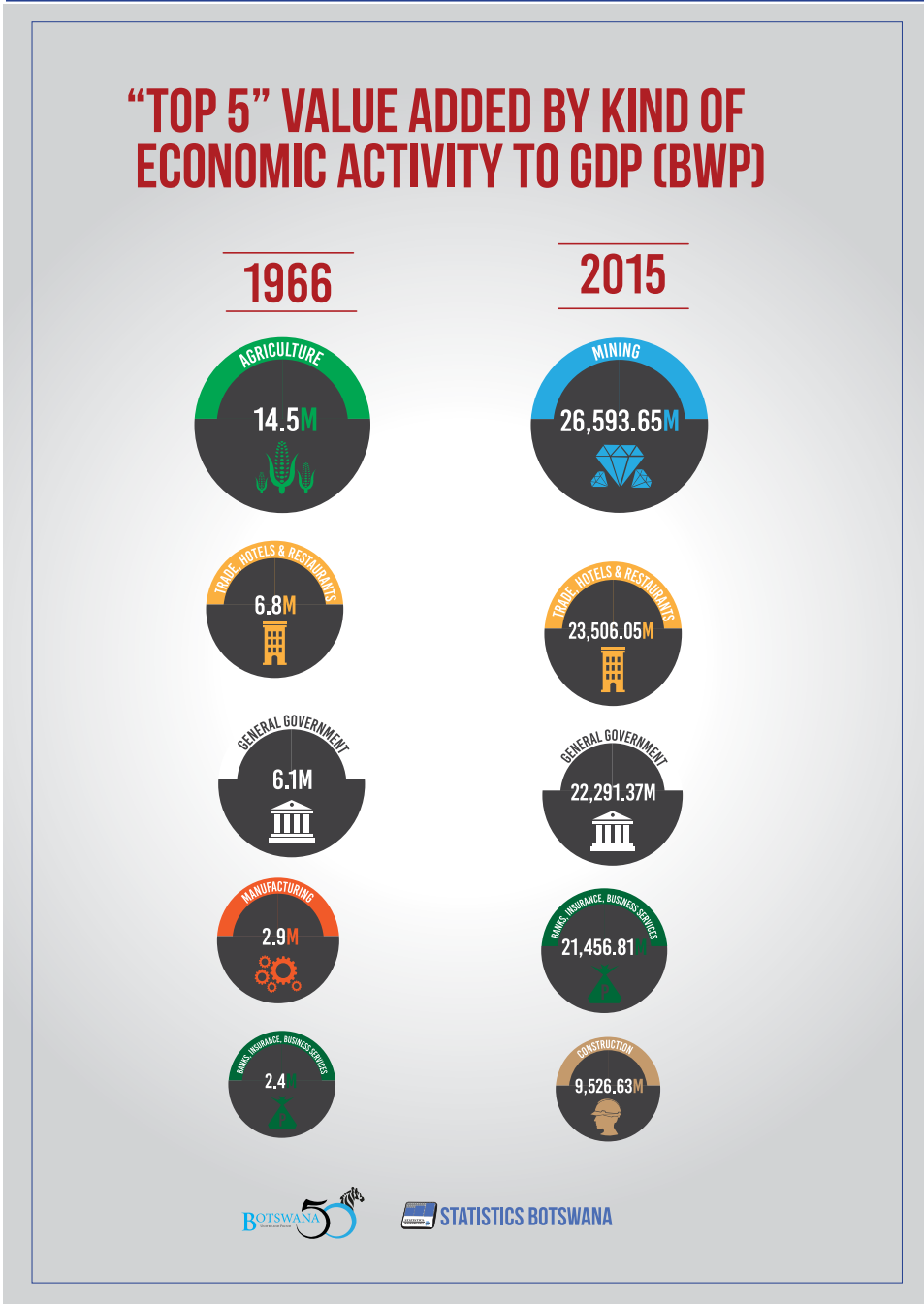


Table 2: Gross Domestic Product at Current\Nominal Prices in Million Pula from 1964-2015

Year	GDP in nominal terms	GDP per capita nominal prices
1964	36.8	70.7
1965	35.0	67.4
1966	39.3	72.8
1967	45.1	82.0
1968	46.8	83.6
1969	54.7	96.0
1970	65.5	112.9
1971	83.9	142.2
1972	109.6	174.0
1973	144.2	221.9
1974	201.2	304.8
1975	227.6	327.0
1976	297.7	409.0
1977	349.3	458.4
1978	411.2	515.3
1979	566.7	678.7
1980	769.7	880.7
1981	879.4	961.1
1982	917.6	961.8
1983	1 172.5	1 185.6
1984	1 399.2	1 363.8
1985	1 822.9	1 714.9
1986	2 419.0	2 193.1
1987	2 814.8	2 462.6
1988	3 784.2	3 193.4
1989	5 887.4	4 787.7
1990	6 539.7	5 133.2
1991	7 565.0	5 731.5
1992	8 376.5	6 189.8
1993	9 119.2	6 580.7
1994	11 434.4	7 869.2
1995	13 113.9	8 800.8
1996	16 114.7	10 550.8
1997	18 327.7	11 707.1

Table 2: Gross Domestic Product at Current\Nominal Prices in Million Pula from 1964-2015 Continued

Year	GDP in nominal terms	GDP per capita nominal prices
1998	20 244.0	12 615.7
1999	25 361.6	15 627.3
2000	29 530.8	17 991.2
2001	32 066.1	19 077.2
2002	34 416.2	20 097.5
2003	37 181.5	21 311.8
2004	42 036.6	23 650.1
2005	50 752.2	28 026.8
2006	59 106.9	32 038.3
2007	67 152.7	35 727.9
2008	74 720.9	39 021.1
2009	73 462.4	37 656.1
2010	86 867.4	43 705.9
2011	107 243.0	52 962.0
2012	111 896.2	54 240.5
2013	124 310.7	59 146.6
2014	142 466.1	66 534.3
2015	145 726.2	66 801.2

Table 3: Value added by kind of Economic Activity at Current Prices - Millions of pula (1965 to 2015)

ECONOMIC ACTIVITY	1965	%	1966	1975	1980	1985	1990
Agriculture	11.1	31.7	14.5	69.8	100.3	118.7	306.9
Mining	0.2	0.6	0.1	22.3	241.4	757.4	2922.2
Manufacturing	3.8	10.9	2.9	14.7	28	87.7	318.5
Water and Electricity	0.2	0.6	0.3	6.9	15	42.9	157.5
Construction	2.1	6.0	2.1	22.6	58.1	97.7	465.4
Trade, Hotels & Restaurants of which	6.2	17.7	6.2	17.5	46.9	111.6	459.4
Trade excl. Hotels & Restaurants	n.a	n.a	n.a	n.a	n.a	n.a	399
Hotels & Restaurants	n.a	n.a	n.a	n.a	n.a	n.a	60.4
Transport and communication	1.2	3.4	1.5	6.6	12.8	45.3	178
Banks, Insurance & Business Services	2.1	6.0	2.4	14.6	60.1	117.5	467.1
General Government	5.3	15.1	6.1	29.3	99.3	264.7	801.2
Social and Personal Services	1.2	3.4	1.3	8.5	20.7	55	234.9
Total Value Added, Gross	33.4	95.4	37.4	212.8	682.6	1698.5	6311.1
Net Taxes	1.6	4.6	1.9	14.8	87.2	124.4	228.6
Total GDP at current market prices	35	100.0	39.3	227.6	769.8	1822.9	6539.7
Gross Domestic Product Per Capita (Pula)	67.4		72.8	327	880.7	1714.9	5133.2

Table 3: Value added by kind of Economic Activity at Current Prices - Millions of pula (1965 to 2015) continued

ECONOMIC ACTIVITY	1995	2000	2005	2010	2015	%
Agriculture	608.2	825.3	927.9	2,161.30	3,168.60	2.2
Mining	3,975.10	10,024.10	16,105.10	16,660.80	26,593.70	18.3
Manufacturing	698.1	1,661.70	2,512.00	5,548.30	8,347.30	5.7
Water and Electricity	270.5	512.6	714.9	411.9	-509.4	-0.3
Construction	812.5	1,474.60	2,417.80	5,056.10	9,526.60	6.5
Trade, Hotels & Restaurants of which	1,275.70	2,968.80	5,498.90	13,084.30	23,506.00	16.1
Trade excl. Hotels & Restaurants	1,038.80	2,368.50	3,979.90	8,101.00	14,649.30	10.1
Hotels & Restaurants	216.1	560.7	1,431.90	5,053.10	8,856.70	6.1
Transport and communication	491.4	969	1,825.10	4,470.80	8,552.80	5.9
Banks, Insurance & Business Services	1,700.10	3,268.60	5,918.60	11,609.60	21,456.80	14.7
General Government	1,995.30	4,313.50	7,195.50	13,377.30	22,291.40	15.3
Social and Personal Services	560.2	1,042.20	2,544.40	5,242.70	8,653.00	5.9
Total Value Added, Gross	12,387.10	27,060.50	45,660.20	77,623.10	131,586.90	90.3
Net Taxes	726.8	2,470.30	5,092.00	9,244.40	14,127.70	9.7
Total GDP at current market prices	13,113.90	29,530.80	50,752.20	86,867.40	145,714.60	100.0
Gross Domestic Product Per Capita (Pula)	8,800.80	17,991.20	28,026.80	43,705.90	66,801.20	

International Merchandise Trade Statistics

3

Chart 5: International Merchandise Trade Statistics in Million Pula from 1980 to 2015

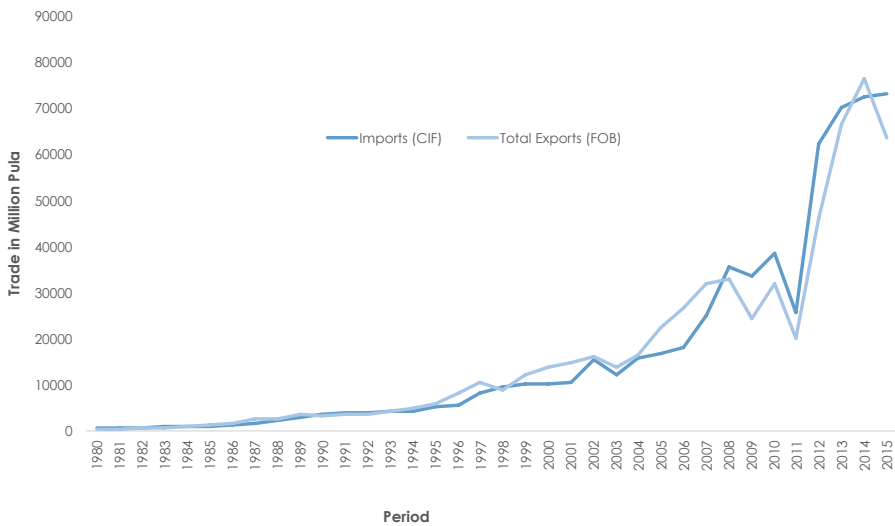


Chart 6: International Merchandise Trade Statistics in Million Pula from 2000 to 2015

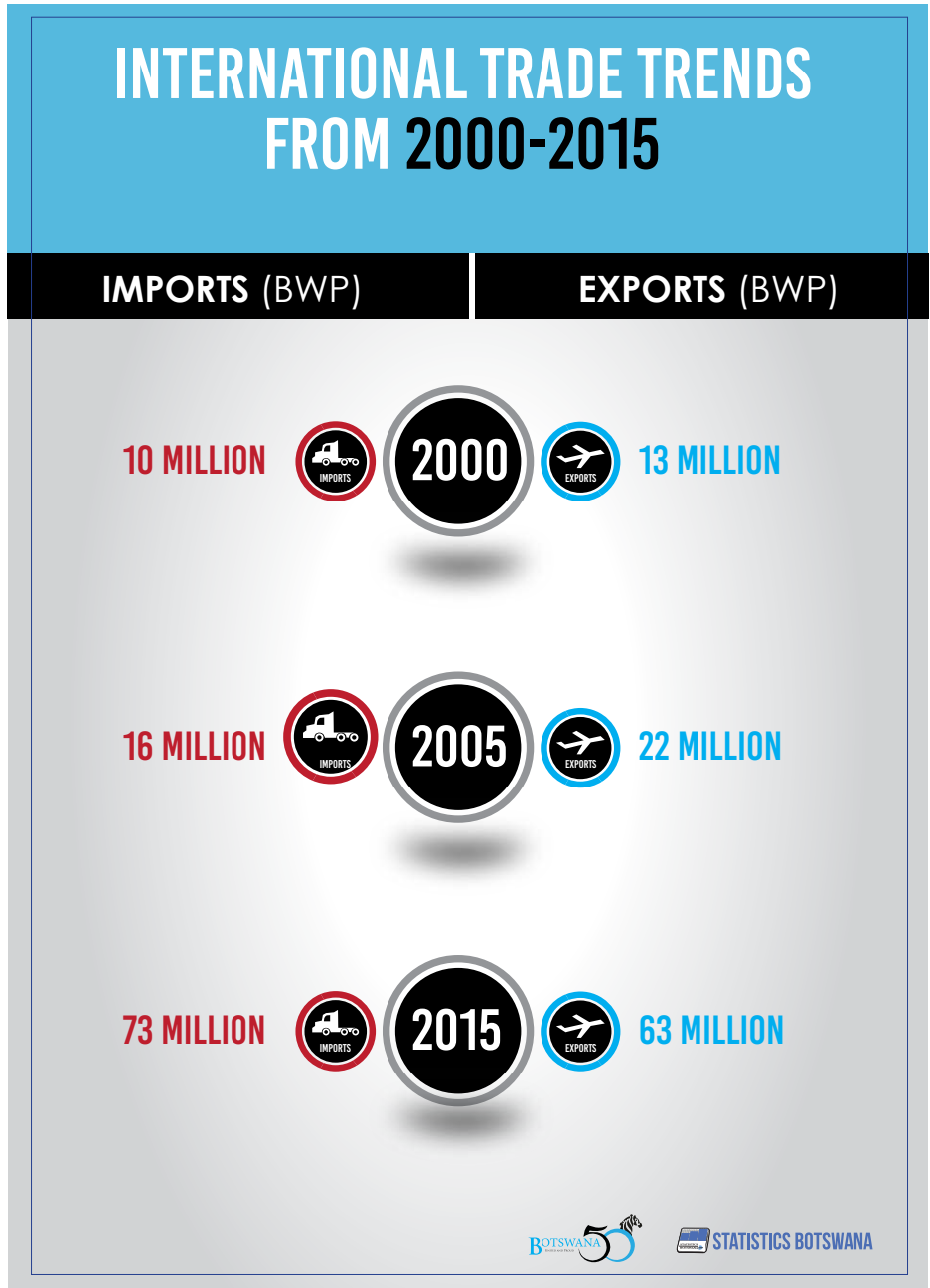


Table 4: Total International Merchandise Trade
 Statistics in Units of Accounts (1966 – 1979)

Period	Imports (CIF)	Total Exports(FOB)	Trade Balance
1966	18.8	10.8	(8.0)
1967	22.4	9.2	(13.2)
1968	23.2	7.5	(15.7)
1969	32.7	13.1	(19.6)
1970	40.9	18.3	(22.6)
1971	59.1	30.3	(28.8)
1972	84.2	44.8	(39.4)
1973	115.0	59.2	(55.8)
1974	125.4	82.0	(43.4)
1975	159.3	105.0	(54.3)
1976	181.4	153.1	(28.3)
1977	239.6	156.7	(82.9)
1978	307.1	192.7	(114.4)
1979	438.3	367.3	(71.0)

Note: Units of Accounts is equivalent to South African Rand
 (..) negative

Table 5: Total International Merchandise Trade
 Statistics in Millions of Pula (1980 – 2015)

Period	Imports (CIF)	Total Exports (FOB)	Trade Balance
1980	537.8	390.4	(147.4)
1981	663.9	332.3	(331.7)
1982	703.9	467.5	(236.3)
1983	805.9	696.7	(109.2)
1984	895.3	857.1	(38.2)
1985	1,095.2	1384.3	289.1
1986	1,331.4	1619.3	287.8
1987	1,572.5	2664.7	1092.2
1988	2,172.2	2678.3	506.1
1989	3,019.6	3742.6	723.0
1990	3,619.5	3319.1	(300.4)
1991	3,927.7	3738.0	(189.7)
1992	3,970.1	3675.0	(295.1)
1993	4,285.0	4270.9	(14.1)
1994	4,407.3	4965.0	557.7
1995	5,307.1	5941.5	634.4
1996	5,720.6	8133.4	2412.8
1998	9,513.1	8696.9	(816.2)
1999	10,164.4	12227.8	2063.5
2000	10,229.8	13712.3	3482.5
2001	10,564.4	14658.5	4094.1
2002	15,309.0	16108.7	799.7
2003	12,118.1	13909.6	1791.5
2004	15,786.6	16489.7	703.0
2005	16,591.5	22459.0	5867.4
2006	18,068.5	26548.7	8480.2
2007	24,904.7	31791.6	6886.9
2008	35,441.7	32892.0	(2549.7)
2009	33,559.2	24317.7	(9241.4)
2010	38,447.0	32040.4	(6406.6)
2011	25,601.5	20090.4	(5511.2)
2012	62,113.4	45914.5	16198.9
2013	70,210.6	66401.9	(3808.7)
2014	72,416.6	76208.4	3791.8
2015	73,169.0	63436.1	(9732.9)

(..) negative

Table 6: Selected Principal Import & Export Commodity in Units of Accounts (1972-1979)

Year	Fuel (Import)	Diamonds (Export)
1972	3.8	19.5
1973	6.2	20
1974	13.7	30.1
1975	16.8	32.1
1976	19.2	37.5
1977	25.3	48.4
1978	27.1	79.3
1979	59	189.6

Note: Units of Accounts is equivalent to South African Rand

Table 7: Selected Principal Import & Export Commodity in Millions of Pula (1980-2015)

Year	Fuel (Import)	Diamonds (Export)
1980	70.2	237.7
1981	88	141.1
1982	104.7	257.1
1983	103.6	471
1984	104.2	697.1
1985	162.4	1,237.20
2003	824	10,681.50
2004	1,783.50	12,434.50
2005	2,214.40	16,863.90
2006	3,088.00	19,452.50
2007	3,880.20	20,043.40
2008	6,006.20	20,793.30
2009	4,515.80	15,234.10
2010	5,523.10	21,779.90
2011	8,094.20	29,909.80
2012	10,007.00	36,143.00
2013	10,865.30	55,367.20
2014	10,894.00	65,328.20
2015	9,110.40	52,730.40

Production

4

Chart 7: Electricity Distribution in Kilo Watt Hour (KWH) from 1985 to 2015.

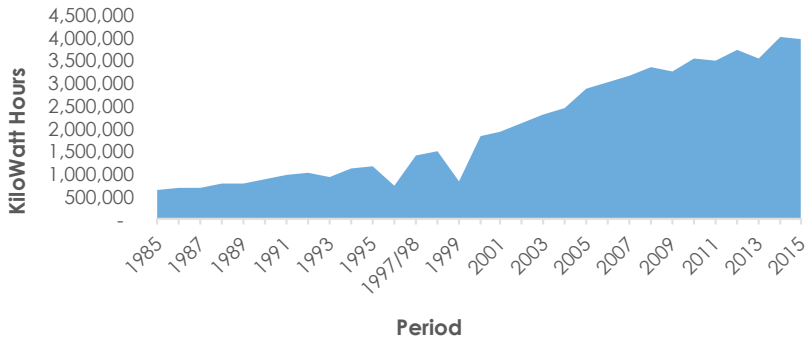


Chart 8: Livestock Population ('000) - (Traditional & Commercial)

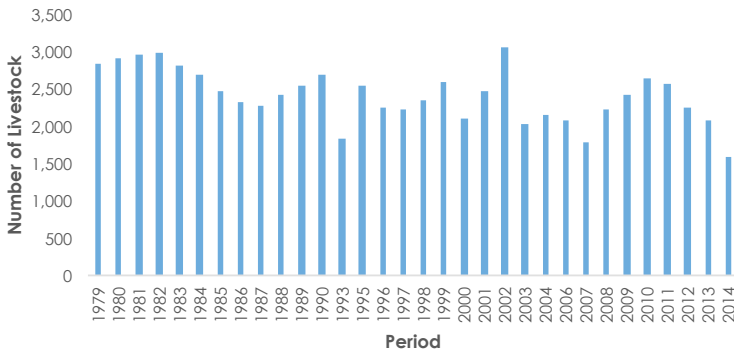


Table 8: Electricity Distribution in Kilo Watt Hour (KWH) from 1985-2015

Year	Electricity Distribution (Kwh)
1985	648,311
1986	695,045
1987	704,034
1988	782,413
1989	784,500
1990	847,963
1991	962,388
1992	1,034,588
1993	936,301
1994	1,091,295
1995	1,156,005
1996	739,123
1997/98	1,380,316
1998/99	1,501,023
1999	800,562
2000	1,828,085
2001	1,922,700
2002	2,112,202
2003	2,303,643
2004	2,416,638
2005	2,841,685
2006	3,001,223
2007	3,143,311
2008	3,315,223
2009	3,236,648
2010	3,545,052
2011	3,472,442
2012	3,703,010
2013	3,502,437
2014	3,989,880
2015	3,973,685

Table 9: Mineral Production 1981 to 2015

Year	Minerals			
	Diamonds (Carats)	Copper (tonnes)	Nickel (tonnes)	Soda Ash (tonnes)
1981	4,960	17,815	18,279	-
1982	7,562	18,375	17,763	-
1983	10,897	20,266	18,214	-
1984	12,882	21,517	18,604	-
1985	12,634	21,692	19,565	-
1986	13,138	21,337	18,972	-
1987	13,324	18,934	16,528	-
1988	15,229	24,428	22,533	-
1989	15,201	21,364	19,578	-
1990	17,350	20,612	19,022	-
1991	16,541	20,576	19,294	63,154
1992	15,978	20,413	18,873	122,367
1993	14,731	21,621	20,132	126,000
1994	15,540	22,780	19,041	174,222
1995	16,674	21,029	18,672	201,641
1996	17,707	23,268	23,294	117,739
1997	20,151	20,711	21,053	199,990
1998	19,693	19,805	16,758	189,700
1999	21,063	19,779	19,258	228,693
2000	24,554	20,977	24,218	190,489
2001	25,583	19,183	22,453	251,234
2002	28,368	21,590	23,896	283,400
2003	30,371	27,400	24,289	234,236
2004	31,037	21,392	22,524	264,695
2005	31,832	28,115	30,883	281,976
2006	34,293	26,201	29,687	238,942
2007	33,639	22,589	26,532	279,625
2008	32,595	23,146	28,940	263,566
2009	17,733	24,382	29,616	211,975
2010	22,018	22,750	25,009	240,898
2011	22,901	16,105	15,675	257,851
2012	20,619	17,620	17,942	248,629
2013	23,134	21,300	22,848	227,913
2014	24,658	14,628	14,958	268,529
2015	20,823	13,888	16,789	243,369

-Data not available

Table 10: Livestock Population ('000) - (Traditional & Commercial) & Crop Production 1979-2014

Year	Cattle	Sorghum (tonnes)	Maize (tonnes)
1979	2,840	5,000	3,000
1980	2,911	29,000	12,000
1981	2,967	28,000	22,000
1982	2,979	4,000	13,000
1983	2,818	5,000	90,00
1984	2,685	6,000	500
1985	2,459	15,000	1,500
1986	2,332	16,000	3,600
1987	2,264	18,000	3,300
1988	2,408	94,000	7,300
1989	2,543	53,000	20,000
1990	2,696	38,200	12,000
1993	1,821	10,797	2,976
1995	2,530	113,547	18,953
1996	2,249	59,200	24,629
1997	2,212	13,450	22,647
1998	2,345	3,743	2,344
1999	2,581	6,658	3,796
2000	2,099	12,671	19,962
2001	2,468	1,583	4,976
2002	3,060	15,805	16,447
2003	2,028	23,501	1,633
2004	2,155	6,095	4,291
2006	2,071	12,369	14,896
2007	1,788	11,774	2,158
2008	2,220	23,632	8,969
2009	2,413	29,326	19,247
2010	2,635	31,591	16,575
2011	2,554	32,591	29,235
2012	2,247	24,021	7,677
2013	2,084	10,231	3,844
2014	1,597	14,310	28,550

Transport & Infrastructure

5

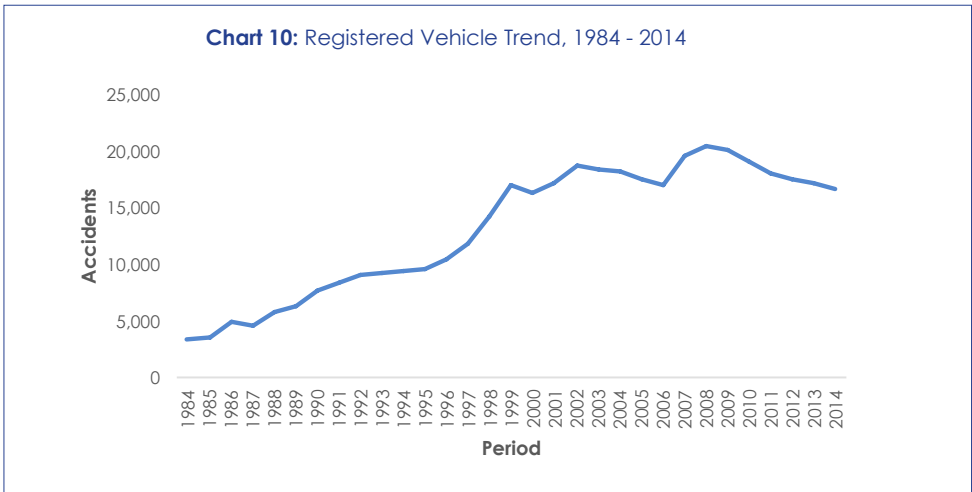
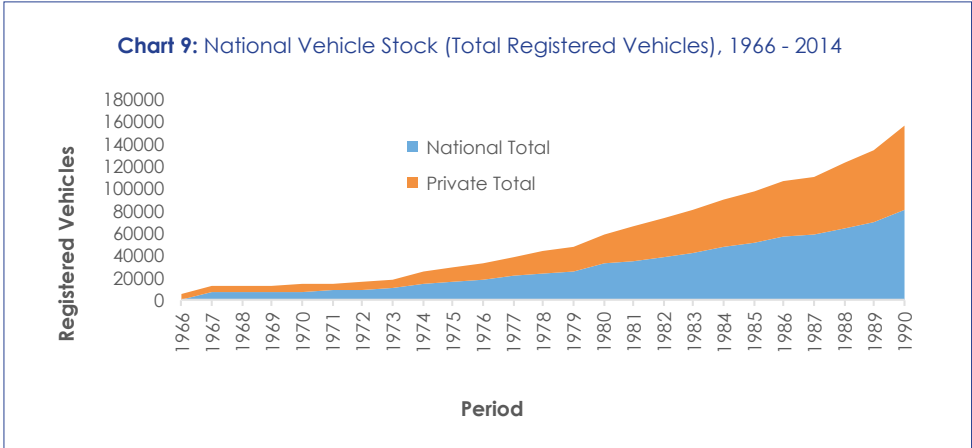


Chart 11: Motor Vehicle Accident Trend, 1984 - 2014

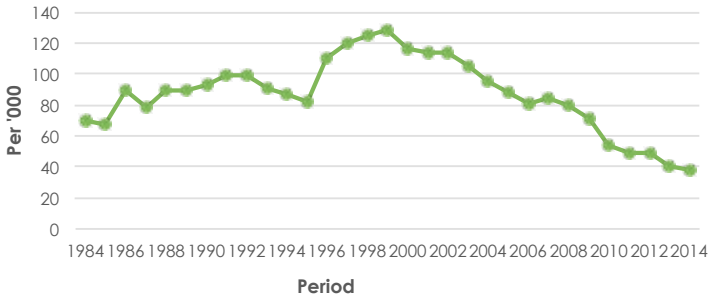


Chart 12: Air Transport - Passenger Movements by Type, 1984 - 2014

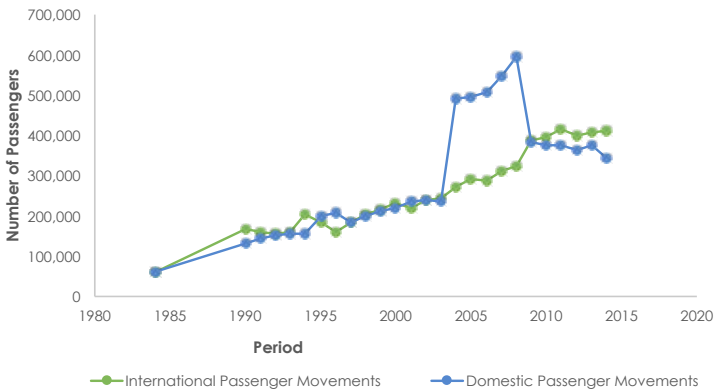


Table 11: National Vehicle Stock
 (Total Registered Vehicles), 1966 - 2014

Year	National Total	Private Total
1966	-	4,302
1967	6,485	4,992
1968	6,618	5,101
1969	6,954	5,681
1970	7,552	6,215
1971	8,044	6,565
1972	9,220	7,663
1973	9,967	8,357
1974	13,493	11,668
1975	15,372	13,370
1976	17,780	15,400
1977	20,683	17,897
1978	23,627	19,742
1979	25,789	21,827
1980	31,684	27,298
1981	34,698	30,862
1982	38,451	34,293
1983	42,479	38,108
1984	47,192	42,517
1985	51,678	45,748
1986	55,604	50,127
1987	57,705	52,811
1988	64,301	58,357
1989	70,030	63,642
1990	81,134	74,423
1991	84,442	78,010
1992	90,544	84,482
1993	101,031	94,610
1994	108,590	101,454
1995	115,321	107,675
1996	93,836	84,840

Table 11: National Vehicle Stock
 (Total Registered Vehicles), 1966 -
 2014 continued

Year	National Total	Private Total
1998	114,015	106,525
1999	131,796	120,508
2000	139,322	131,270
2001	150,574	141,026
2002	162,807	153,912
2003	173,828	164,502
2004	189,265	179,376
2005	200,064	189,043
2006	211,532	200,134
2007	230,063	219,403
2008	256,498	245,738
2009	280,656	270,887
2010	344,719	333,461
2011	367,155	357,104
2012	400,873	389,815
2013	417,015	405,155
2014	435,750	425,526

Table 12: Motor Vehicle Accident Trend, 1984 - 2014

Year	Number of Accidents	Registered Vehicles	Estimated Population ('000s)	Accidents Per '000 Vehicles	Accidents Per 10,000 Population
1984	3,300	47,192	1,043	69.9	31.7
1985	3,521	51,678	1,081	68.1	32.6
1986	4,983	55,604	1,121	89.6	44.5
1987	4,515	57,705	1,164	78.2	38.8
1988	5,741	64,301	1,204	89.3	47.7
1989	6,299	70,030	1,246	89.9	50.5
1990	7,614	81,134	1,291	93.8	59
1991	8,381	84,442	1,327	99.3	63.2
1992	9,017	90,544	1,359	99.6	66.4
1993	9,169	101,031	1,391	90.8	65.9
1994	9,420	108,590	1,425	86.7	66.1
1995	9,536	115,321	1,459	82.7	65.4
1996	10,337	93,836	1,496	110.2	69.1
1997	11,882	99,161	1,533	119.8	77.5
1998	14,279	114,015	1,572	125.2	90.8
1999	16,922	131,796	1,611	128.4	105
2000	16,313	139,322	1,651	117.1	98.8
2001	17,125	150,574	1,622	114	106
2002	18,610	162,807	1,650	114	113
2003	18,328	173,828	1,673	105	110
2004	18,136	189,265	1,693	96	107
2005	17,522	200,064	1,708	88	103
2006	17,035	211,532	1,720	81	99
2007	19,487	230,063	1,736	85	112
2008	20,415	256,498	1,755	80	116
2009	20,000	280,656	1,776	71	113
2010	18,978	344,719	1,800	54	104
2011	18,001	367,155	2,025	49	88.9
2012	17,527	400,873	2,025	49	86.6
2013	17,062	417,015	2,025	41	84.3
2014	16,641	435,750	2,025	38.2	82.2

Source: Botswana Public Service (Road Traffic Accident Unit)

Table 13: Length of Roads Maintained by the Central Government by Type (km), 1980-2014

Year	Bitumen	Gravel	Sand	Total
1980	1,121	1,627	5,278	8,026
1981	1,209	1,698	5,119	8,026
1982	1,495	1,529	5,002	8,026
1983	1,723	1,349	4,954	8,026
1984	1,848	1,285	4,893	8,026
1985	1,885	1,266	4,875	8,026
1986	2,039	1,024	4,973	8,036
1987	2,156	940	5,010	8,106
1988	2,320	932	4,734	7,986
1989	2,483	932	4,631	8,046
1990	2,565	932	4,589	8,086
1991	2,831	932	4,371	8,134
1992	3,663	2,950	2,148	8,761
1993	3,874	2,739	2,148	8,761
1994	4,177	2,632	1,957	8,766
1995	4,761	2,087	1,957	8,805
1996	4,729	2,191	1,841	8,761
1997	4,789	2,131	1,841	8,761
1998	4,969	2,131	1,841	8,941
1999	5,570	2,688	1,959	10,217
2000	5,662	1,999	1,471	9,132
2001	5,804	1,800	1,471	9,075
2002	5,954	1,637	1,325	8,916
2003	6,116	1,501	1,299	8,916
2004	6,116	1,501	1,299	8,916
2005	6,367	1,250	1,299	8,916
2006	6,367	1,250	1,299	8,916
2007	6,396	1,221	1,299	8,916
2008	6,506	1,111	1,299	8,916
2009	6,780	867	1,299	8,946
2010	6,780	867	1,299	8,946
2011	6,689	7,339	4,014	18,042
2012	6,689	7,339	4,014	18,042
2013	6,925	7,560	4,022	18,507
2014	6,925	7,560	4,022	18,507

Table 14: Air Transport - Aircraft and Passenger Movements by Type, 1981 - 2014

Year	Aircraft Movements	International Passenger Movements	Domestic Passenger Movements	International & Domestic Passengers
1981	13,256	137,735
1982	13,762	143,225
1983	12,332	127,019
1984	13,290	60,799	61,574	122,373
1990	26,150	168,773	131,608	300,381
1991	26,249	161,371	145,565	306,936
1992	28,502	155,501	151,444	306,945
1993	32,249	159,735	153,997	313,732
1994	26,759	203,456	156,385	359,841
1995	29,678	182,756	197,926	380,682
1996	61,073	161,232	207,445	368,677
1997	59,736	182,715	183,950	366,665
1998	66,752	204,661	199,411	404,072
1999	69,834	217,264	210,092	427,356
2000	66,951	233,134	220,356	453,490
2001	63,839	221,588	234,688	456,276
2002	59,123	240,277	237,863	478,140
2003	62,126	245,186	237,618	482,804
2004	68,349	270,660	489,787	760,447
2005	72,782	292,942	494,594	787,536
2006	76,390	286,037	509,386	795,423
2007	76,407	310,761	547,648	858,409
2008	77,534	324,291	593,874	918,165
2009	102,526	388,690	383,496	772,186
2010	74,453	397,519	377,252	774,771
2011	82,799	414,560	373,901	788,461
2012	80,167	398,557	361,955	760,512
2013	86,362	406,438	377,217	783,655
2014	83,285	413,425	342,296	755,721

Source: Civil Aviation Authority Botswana, Ministry of Transport and Communication
 Data not available

Table 15: Rail Goods Traffic by Direction
(Net tones), 1980 - 2014

Year	Domestic Traffic	Transit Traffic	Total Traffic
1980	1,100,678	1,859,019	2,959,697
1981	1,055,864	1,486,037	2,541,901
1982	1,181,266	1,700,757	2,882,023
1983	1,128,408	1,669,178	2,797,586
1984	1,153,231	1,603,832	2,757,063
1985	1,163,616	1,673,574	2,837,190
1986	1,130,107	1,781,422	2,911,529
1987	1,178,564	779,431	1,957,995
1988	1,251,548	769,815	2,021,363
1989	1,278,949	753,977	2,032,926
1990	1,452,136	852,672	2,304,808
1991	1,450,846	723,074	2,173,920
1992	1,500,307	1,318,742	2,819,049
1993	1,383,228	602,414	1,985,642
1994	1,200,075	265,224	1,465,299
1995	1,385,678	367,702	1,753,380
1996	1,340,511	491,625	1,832,136
1997	1,549,142	883,006	2,432,148
1998	1,610,625	1,172,340	2,782,965
1999	1,727,995	772,972	2,500,967
2000	1,729,651	372,843	2,102,494
2001	1,689,855	149,075	1,838,930
2002	1,788,280	291,921	2,080,201
2003	1,756,598	239,231	1,995,829
2004	1,840,848	133,249	1,974,097
2005	1,689,980	107,071	1,797,051
2006	1,598,814	113,793	1,712,607
2007	1,748,983	1,677	1,750,660
2008	1,711,889	47,610	1,759,499
2009	1,894,175	33,276	1,927,451
2010	1,906,811	104,000	2,010,811
2011	1,995,767	39,044	2,034,811
2012	1,922,012	62,884	1,984,896
2013	1,776,158	107,000	1,883,158
2014	1,713,807	131,001	1,844,808

Environment & Climate

6

Table 16: Long term (annual) averages (Meteorological years July to June)
A. Average annual maximum temperatures 2006-16 (degrees celsius)

Year	Gantsi	Shakawe	Maun	Francistown	SSKA	Mahalapye	Tsabong	Tshane
2006	29.2	30.1	30.5	28.8	28.2	28.3	28.8	28.5
2007	30.0	30.8	31.6	29.3	29.1	29.6	29.9	29.3
2008	29.6	30.4	30.7	28.3	27.4	27.7	29.7	29.1
2009	29.9	30.8	30.9	29.1	28.1	28.6	29.1	29.7
2010	29.3	30.3	30.5	28.9	27.1	28.2	28.7	28.9
2011	29.1	30.6	30.8	29.1	27.8	28.0	29.3	28.6
2012	30.0	30.6	31.3	29.8	28.7	28.8	29.4	29.2
2013	31.0	31.4	31.6	29.6	28.6	29.0	30.6	30.1
2014	28.7	30.3	30.0	28.8	27.7	28.1	28.7	28.4
2015	31.0	31.0	31.1	29.7	29.0	29.1	29.7	29.6
2016	30.0	31.1	31.1	29.1	26.2	28.3	29.4	29.3

Highest monthly average maximum temperature (2006-16)	36.1	37.4	37.6	35.0	35.1	36.2	37.0	36.0
-------------------------------------------------------	------	------	------	------	------	------	------	------

B. Average annual minimum temperatures 2006-16 (degrees celsius)

Year	Gantsi	Shakawe	Maun	Francistown	SSKA	Mahalapye	Tsabong	Tshane
2006	13.5	14.3	15.9	13.9	13.3	14.3	11.7	13.2
2007	12.9	13.5	15.8	13.5	13.4	14.3	12.0	13.1
2008	13.0	12.9	15.3	13.0	12.8	13.3	12.2	13.0
2009	14.2	14.0	16.3	13.5	12.7	14.1	13.1	13.9
2010	14.3	14.8	16.5	14.1	12.8	14.3	12.8	13.9
2011	13.7	14.1	16.5	13.8	13.5	13.9	12.9	13.6
2012	13.1	13.2	16.0	12.9	12.2	12.5	11.5	12.7
2013	14.1	13.3	15.9	13.5	13.4	12.9	12.6	13.7
2014	14.0	15.2	16.7	13.7	13.6	13.0	12.4	13.3
2015	15.3	14.5	16.9	12.4	13.6	13.5	12.1	13.7
2016	14.4	14.6	18.0	13.5	15.0	15.2	14.0	14.7

Lowest monthly average minimum temperature (2006-16)	2.9	2.7	7.2	3.4	1.6	3.8	0.2	2.4
------------------------------------------------------	-----	-----	-----	-----	-----	-----	-----	-----

Table 17: Aerial Censuses of Wildlife Population Estimates of Selected Species- National Level (2003, 2004 & 2012)

Species	Wildlife Population Estimates		
	2003	2004	2012
Elephant	109,471	151,000	207,545
Gemsbok	101,522	96,943	133,249
Impala	67,040	42,694	114,900
Zebra	39,308	52,162	99,077
Hartebeest	49,978	39,553	62,569
Buffalo	33,305	31,615	61,105
Ostrich	49,406	43,229	55,916
Wildebeest	45,858	35,088	53,159
Steenbok	36,368	26,617	41,531
Springbok	35,811	50,332	35,688
Eland	31,598	21,711	34,735
Lechwe	48,983	35,722	26,322
Kudu	27,440	28,075	23,038
Duiker	9,786	3,892	21,608
Giraffe	9,463	11,090	8,976
Warthog	4,154	2,919	7,026
Hippo	1,466	3,094	3,633
Carcass OL	-	17	3,426
Tsessebe	5,119	2,361	2,138
Waterbuck	950	944	2,048
Sable	2,877	2,249	1,989
Roan	188	391	615
Sitatunga	167	12	63
Crocodile	400	373	-
Rhino (W)	-	24	-
Reedbuck	67	-	-
Baboon	3,720	3,415	-
Jackal	1,985	1,319	-
Wilddog	-	-	-
Spotted Hyaena	119	15	-
Brown Hyaena	75	54	-
Lion	290	621	-
BE Fox	96	394	-
Cheetah	-	308	-

NOTE: - No sightings of animals recorded

Table 18: Population with Access to Safe Drinking Water by Urban and Rural Areas, (%), 1991 - 2013

Area	1991	1996	2001	2004	2006	2008	2009	2011	2012	2013
Urban	100.0	100.0	100.0	99.0	99.0	99.0	99.0	99.0	99.0	99.0
Rural	88.0	89.0	84.0	91.0	91.0	91.0	92.0	83.0	83.0	94.0
Total	93.0	94.0	94.0	96.0	96.0	96.0	96.0	97.0	97.0	97.0

Table 19: Population with Access to Improved Sanitation by Urban and Rural Areas, (%), 1991 - 2013

Area	1991	2001	2004	2006	2008	2009	2011	2013
Urban	62.0	69.0	72.0	73.0	75.0	75.0	93.0	99.0
Rural	23.0	33.0	36.0	38.0	40.0	41.0	44.0	62.0
Total	41.0	52.0	56.0	58.0	61.0	62.0	85.0	85.0

Tourism

7

Chart 13: Total Arrivals from 1995 to 2014

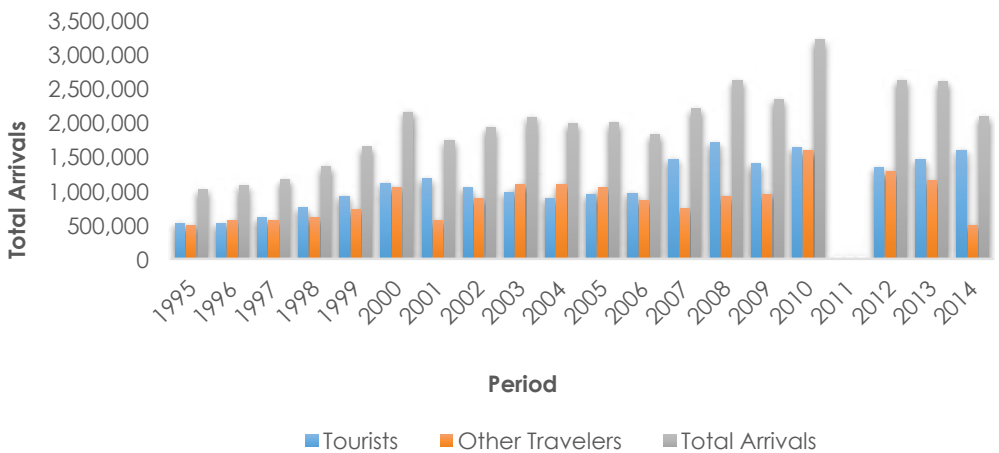


Table 20: Total arrivals from 1995-2014

Year	Tourists	Other Travelers	Total Arrivals
1995	521,041	490,016	1,011,057
1996	512,118	559,003	1,071,121
1997	606,781	555,993	1,162,774
1998	750,821	600,977	1,351,798
1999	916,405	721,544	1,637,949
2000	1,103,796	1,041,574	2,145,370
2001	1,174,559	556,762	1,731,321
2002	1,036,559	881,260	1,917,819
2003	975,465	1,091,054	2,066,519
2004	884,774	1,091,975	1,976,749
2005	947,981	1,040,046	1,988,027
2006	959,282	860,775	1,820,057
2007	1,459,547	741,406	2,200,953
2008	1,696,515	912,371	2,608,886
2009	1,392,800	943,488	2,336,288
2010	1,628,340	1,579,422	3,207,762
2011	-	-	-
2012	1,335,044	1,277,511	2,612,555
2013	1,447,529	1,150,629	2,598,158
2014	1,587,290	495,231	2,082,521

- Data not available

Table 21: Tourists by type from 1998-2014

Year	Visiting Friends & Relatives (VFR)	Holiday/Leisure	Business	In transit	Total
1998	319,440	205,146	113,729	112,506	750,821
1999	431,590	237,618	118,779	128,418	916,405
2000	509,346	316,847	143,304	134,299	1,103,796
2001	484,140	306,980	132,012	251,427	1,174,559
2002	560,054	197,219	146,437	132,849	1,036,559
2003	529,423	226,167	110,960	108,915	975,465
2004	460,680	242,053	82,673	99,368	884,774
2005	420,288	313,658	83,844	130,191	947,981
2006	497,415	254,503	79,123	128,241	959,282
2007	871,291	323,030	119,224	146,002	1,459,547
2008	976,092	381,168	146,287	192,968	1,696,515
2009	724,603	319,111	147,393	201,693	1,392,800
2010	775,065	409,185	187,947	256,143	1,628,340
2011	-	-	-	-	-
2012	606,581	367,427	149,158	211,878	1,335,044
2013	185,654	474,455	356,948	430,472	1,447,529
2014	417,034	274,701	599,782	295,773	1,587,290

- Data not available

Information & Communication Technology

8

Chart 14: Mobile Cellular Telephone Subscriptions per 100 Inhabitants, 2000-2014

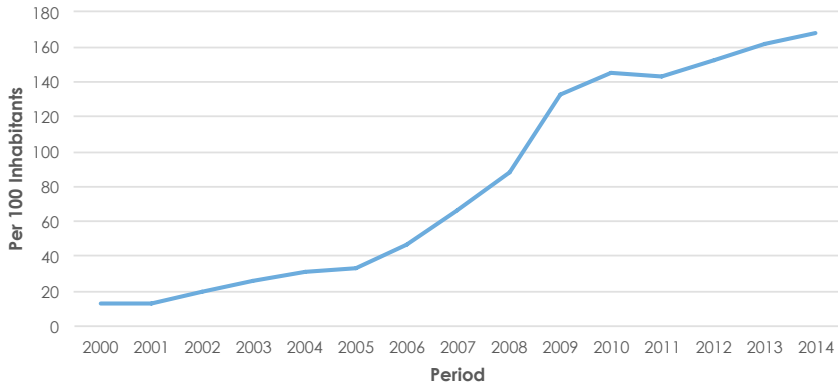


Chart 15: Fixed Internet Subscriptions per 100 Inhabitants, 2000-2014

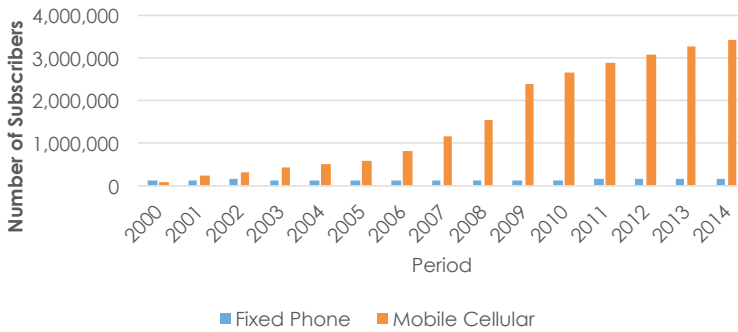


Table 22: ICT Indicators, 2000 - 2014

Year	Fixed Telephone Lines		Mobile Cellular Telephone Subscriptions		Internet Services				Mobile Service Providers
	Number	Per 100 Inhabitants	Number	Per 100 Inhabitants	Fixed Broadband/ ADSL		Mobile Broadband		
					Number of Subscriptions	Per 100 Inhabitants	Number of Subscriptions	Per 100 Inhabitants	
2000	123,819	7.7	106,029	13.0	-	-	46,583	3.0	2
2001	135,900	8.0	222,190	13.0	-	-	57,653	3.0	2
2002	148,155	8.0	332,264	20.0	-	-	56,588	3.0	2
2003	131,399	8.0	444,978	26.0	-	-	56,662	3.0	2
2004	131,774	8.0	522,840	31.0	-	-	56,474	3.0	2
2005	136,463	8.0	571,437	33.0	1,600	0.1	54,712	3.0	2
2006	132,034	8.0	825,076	47.0	1,800	0.1	72,827	4.0	2
2007	136,946	8.0	1,153,768	66.0	3,540	0.2	892,111	5.0	2
2008	142,282	8.0	1,559,102	88.0	8,900	0.5	102,114	6.0	3
2009	144,195	8.0	2,390,868	133.0	10,000	0.6	100,600	6.0	3
2010	139,695	8.0	2,644,982	145.0	11,978	0.7	128,382	7.0	3
2011	149,578	7.4	2,900,263	143.0	15,707	1.0	238,942	11.0	3
2012	160,488	8.0	3,081,726	148.0	18,838	1.0	769,805	37.0	3
2013	174,165	8.2	3,274,542	154.0	27,819	1.3	1,444,207	68.0	3
2014	169,236	8.0	3,410,507	158.0	27,867	1.3	2,496,146	115.0	3

- Data not Available

Population

9

Chart 16: Botswana Population 1964-2021

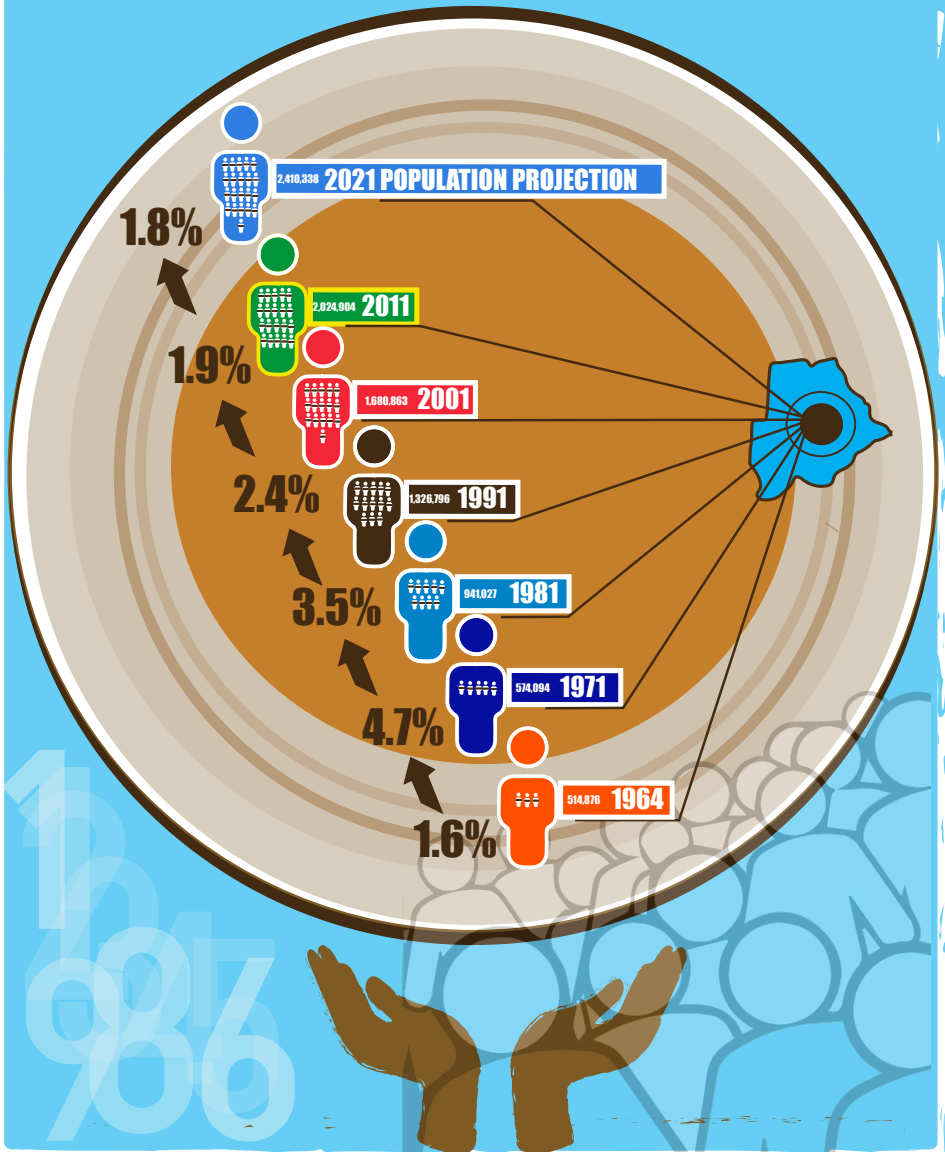
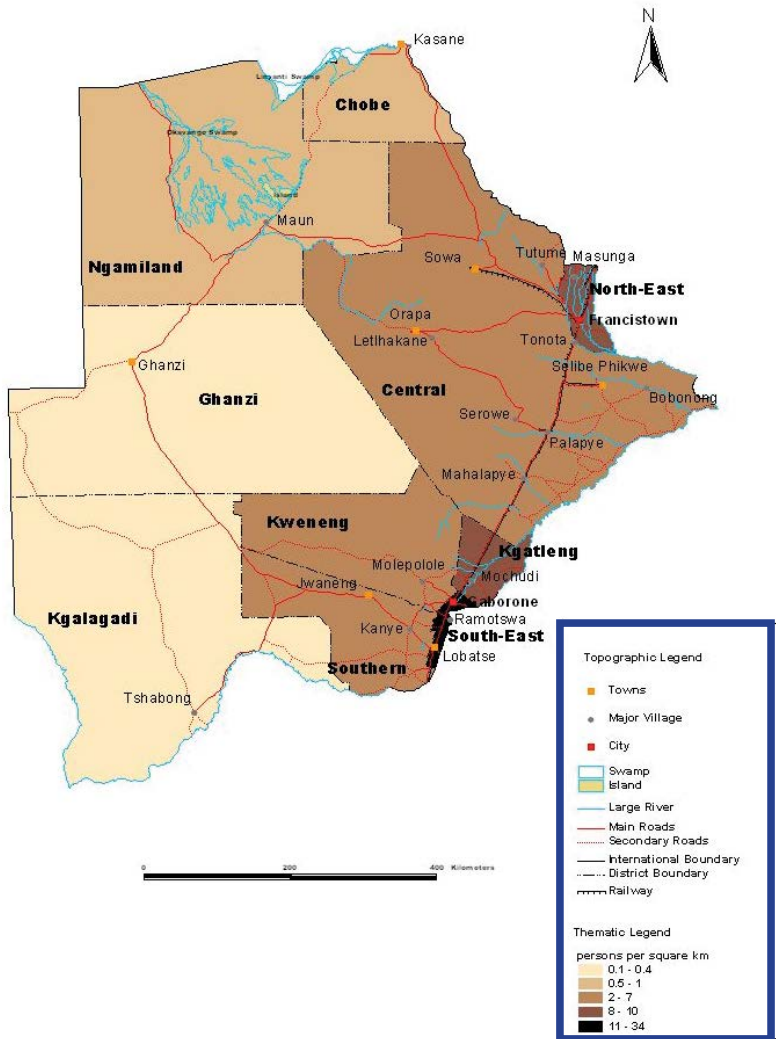
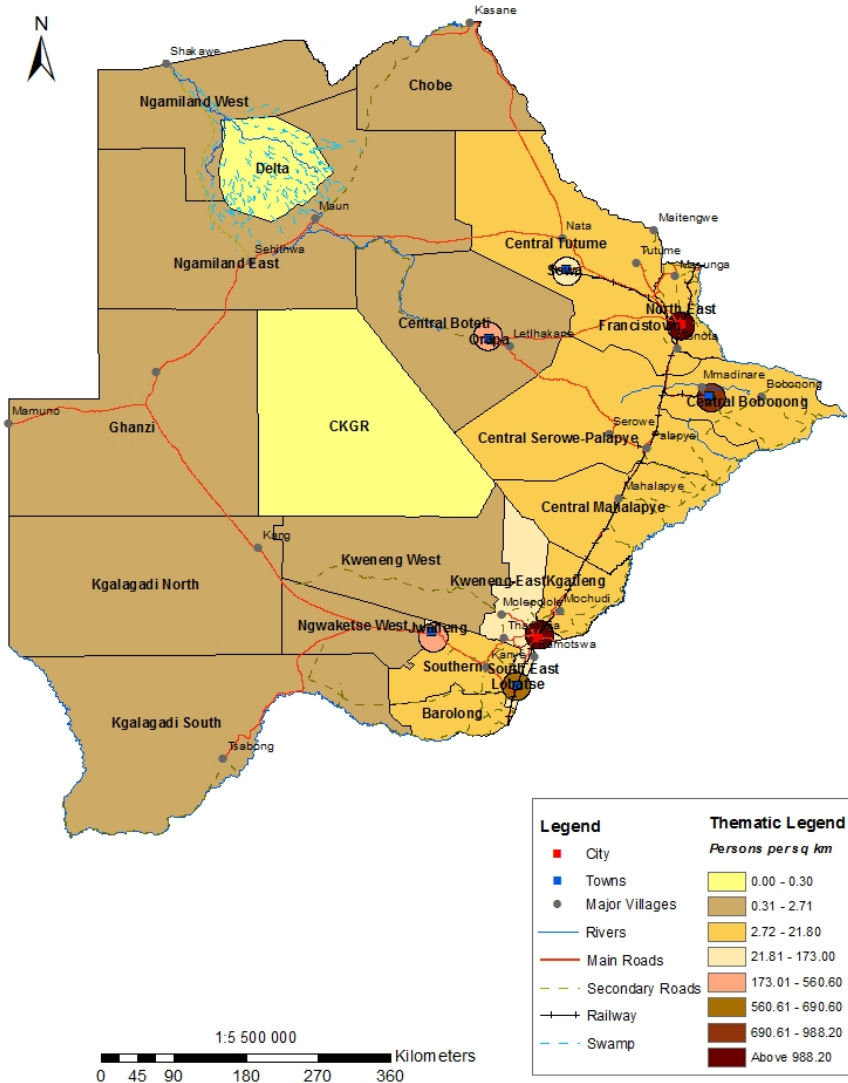


Chart 17: 2001 Population Density by Administrative Districts



Compiled and Prepared by CSO, Cartography Unit 2004 Botswana.

Chart 18: 2011 Population Density by Administrative Districts



Compiled and Prepared by Statistics Botswana, Cartography Unit 2016, Botswana

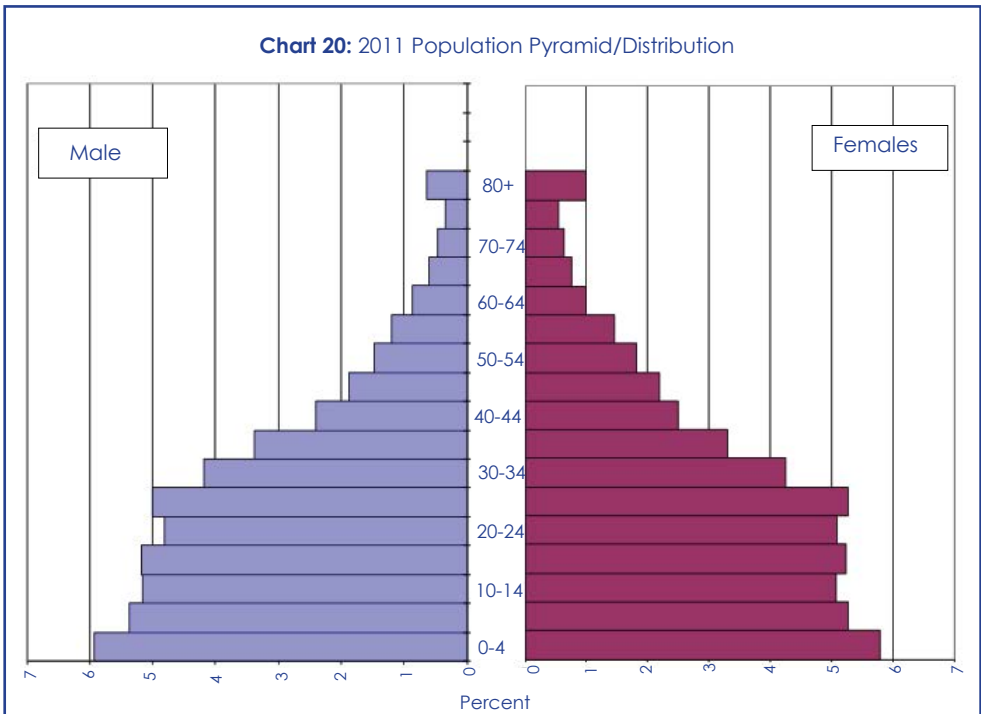
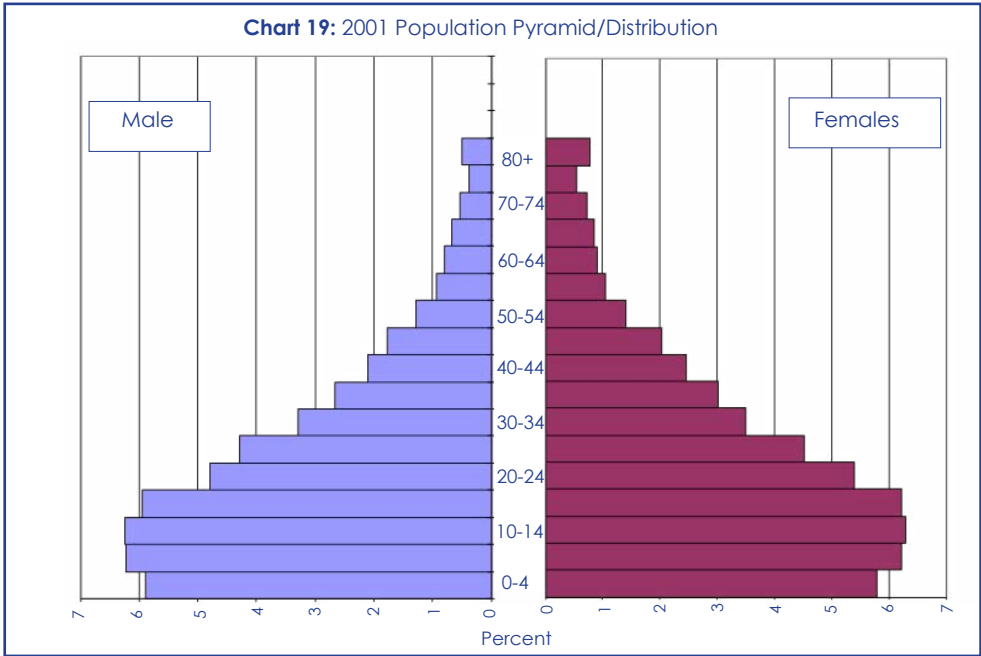


Table 23: Population Distributions by district and Sex.

District	1981			1991		
	Male	Female	Total	Male	Female	Total
Gaborone	30,682	28,975	59,657	68,248	65,220	133,468
Franstown	14,532	16,533	31,065	31,665	33,579	65,244
Lobatse	9,129	9,905	19,034	12,541	13,511	26,052
Selibe Phikwe	15,336	14,133	29,469	20,343	19,429	39,772
Orapa	3,443	1,786	5,229	4,713	4,114	8,827
Jwaneng	4,285	1,282	5,567	5,895	5,293	11,188
Sowa Town	-	-	-	1,462	766	2,228
SOUTHERN	54,902	64,751	119,653	68,377	79,012	147,389
Kanye/Moshupa	47,550	56,632	104,182	59,628	69,361	128,989
Barolong	7,352	8,119	15,471	8,749	9,651	18,400
Ngwaketse West	-	-	-	-	-	-
SOUTH EAST	14,214	16,434	30,648	20,591	22,993	43,584
KWENENG	53,440	63,687	117,127	80,328	90,109	170,437
Kweneng East	53,440	63,687	117,127	80,328	90,109	170,437
Kweneng West	-	-	-	-	-	-
KGATLENG	20,480	23,981	44,461	27,348	30,422	57,770
CENTRAL		173,860	323,329	201,643	228,689	430,332
Central Serowe	37,865	44,769	82,634	59,988	68,483	128,471
Central Mahalapye	39,295	43,687	82,982	45,442	49,991	95,433
Central Bobonong	21,925	24,511	46,436	25,303	28,255	53,558
Central Boteti	12,279	14,127	26,406	16,834	18,625	35,459
Central Tutume	33,781	41,496	75,277	45,978	54,071	100,049
NORTH EAST	16,649	19,987	36,636	19,920	23,434	43,354
NORTH WEST	35,466	40,531	75,997	51,959	56,701	108,660
Ngamiland East	31,604	36,459	68,063	44,310	50,224	94,534
Ngamiland West	-	-	-	-	-	-
Chobe	3,862	4,072	7,934	7,649	6,477	14,126
Delta	-	-	-	-	-	-
GHANZI	9,457	9,639	19,096	12,401	12,318	24,719
Ghanzi	9,457	9,639	19,096	12,401	12,318	24,719
CKGR	-	-	-	-	-	-
KGALAGADI	11,620	12,439	24,059	15,064	16,070	31,134
Kgalagadi South	11,620	12,439	24,059	15,064	16,070	31,134
Kgalagadi North	-	-	-	-	-	-
Urban Areas	77,407	72,614	150,021	285,340	320,899	606,239
Rural Areas		425,309	791,006	349,060	371,497	720,557
Total		497,923	941,027	634,400	692,396	1,326,796

.... Data not available

Table 23: Population Distributions by district and Sex Continued

District	2001			2011		
	Male	Female	Total	Male	Female	Total
Gaborone	91,851	94,156	186,007	113,536	118,056	231,592
Franstown	40,147	42,876	83,023	48,104	50,857	98,961
Lobatse	14,205	15,484	29,689	14,144	14,863	29,007
Selibe Phikwe	24,336	25,513	49,849	24,732	24,679	49,411
Orapa	4,837	4,314	9,151	4,731	4,800	9,531
Jwaneng	7,616	7,563	15,179	9,819	8,189	18,008
Sowa Town	1,571	1,308	2,879	1,960	1,638	3,598
SOUTHERN	82,368	89,284	171,652	95,811	101,956	197,767
Kanye/Moshupa	53,812	59,892	113,704	62,256	66,991	129,247
Barolong	23,397	24,080	47,477	26,680	28,151	54,831
Ngwaketse West	5,159	5,312	10,471	6,875	6,814	13,689
SOUTH EAST	29,129	31,494	60,623	40,697	44,317	85,014
KWENENG	111,547	118,788	230,335	149,587	154,962	304,549
Kweneng East	91,067	98,706	189,773	125,195	131,557	256,752
Kweneng West	20,480	20,082	40,562	24,392	23,405	47,797
KGATLENG	35,734	37,773	73,507	44,566	47,094	91,660
CENTRAL	240,000	261,381	501,381	279,139	296,925	576,064
Central Serowe	73,294	79,741	153,035	88,879	91,621	180,500
Central Mahalapye	53,322	56,489	109,811	57,547	61,328	118,875
Central Bobonong	32,067	34,897	66,964	34,247	37,689	71,936
Central Boteti	23,482	24,575	48,057	28,143	29,233	57,376
Central Tutume	57,835	65,679	123,514	70,323	77,054	147,377
NORTH EAST	23,164	26,235	49,399	28,596	31,668	60,264
NORTH WEST	69,056	73,914	142,970	85,615	90,016	175,631
Ngamiland East	35,276	37,106	72,382	44,401	45,933	90,334
Ngamiland West	23,030	26,612	49,642	27,913	31,508	59,421
Chobe	9,395	8,863	18,258	12,023	11,324	23,347
Delta	1,355	1,333	2,688	1,278	1,251	2,529
GHANZI	16,916	16,254	33,170	22,452	20,903	43,355
Ghanzi	16,564	15,917	32,481	22,259	20,836	43,095
CKGR	352	337	689	193	67	260
KGALAGADI	21,148	20,901	42,049	25,469	25,023	50,492
Kgalagadi South	13,037	12,901	25,938	15,119	14,897	30,016
Kgalagadi North	8,111	8,000	16,111	10,350	10,126	20,476
Urban Areas	428,856	481,624	910,480	428,856	481,624	910,480
Rural Areas	384,769	385,614	770,383	384,769	385,614	770,383
Total	813,625	867,238	1,680,863	988,958	1,035,946	2,024,904

.... Data not available

Table 24: Population by Age & Sex, 1971-2011

Age	1971			1981			1991			2001			2011		
	Male	Female	Total	Male	Female	Total	Male	Female	Total	Male	Female	Total	Male	Female	Total
0-4	49,831	51,432	101,263	92,388	92,582	184,970	96,676	96,989	193,665	98,635	97,011	195,646	120,000	117,314	237,314
5-9	46,647	47,255	93,902	69,580	69,696	139,276	97,563	99,051	196,614	104,129	104,167	208,296	108,544	106,618	215,162
10-14	38,213	39,479	77,692	57,425	60,419	117,844	89,887	93,596	183,483	104,636	105,332	209,968	104,419	102,875	207,294
15-19	25,246	31,797	57,043	45,222	52,580	97,802	73,112	79,413	152,525	99,626	104,079	203,705	104,818	105,928	210,746
20-24	13,737	25,203	38,940	34,378	44,186	78,564	54,261	62,622	116,883	80,174	90,440	170,614	97,249	103,101	200,350
25-29	12,240	20,175	32,415	26,754	36,221	62,975	45,408	54,440	99,848	71,894	75,872	147,766	101,194	106,658	207,852
30-34	11,347	16,508	27,855	21,428	27,767	49,195	36,620	44,013	80,633	55,004	58,751	113,755	84,515	86,027	170,542
35-39	10,591	15,182	25,773	17,759	21,714	39,473	30,487	35,741	66,228	44,660	50,683	95,343	68,435	66,784	135,219
40-44	9,822	12,390	22,212	15,486	18,290	33,776	23,197	25,001	48,198	35,240	41,133	76,373	48,767	50,530	99,297
45-49	9,951	12,193	22,144	13,668	15,656	29,324	18,553	20,496	39,049	29,575	33,905	63,480	37,881	44,380	82,261
50-54	8,189	8,759	16,948	11,813	13,549	25,362	16,192	17,519	33,711	21,590	23,510	45,100	29,742	36,620	66,362
55-59	6,621	7,522	14,143	10,097	11,194	21,291	12,746	15,003	27,749	15,679	17,626	33,305	24,368	29,681	54,049
60-64	5,450	6,279	11,729	8,529	9,453	17,982	10,485	12,271	22,756	13,379	15,236	28,615	17,344	20,240	37,584
65-69	4,805	5,584	10,389	6,643	7,157	13,800	8,688	11,155	19,843	11,116	14,358	25,474	12,243	15,504	27,747
70-74	3,630	4,077	7,707	4,985	5,639	10,624	6,857	7,872	14,729	8,894	12,236	21,130	9,464	12,797	22,261
75+	5,800	8,139	13,939	6,949	11,820	18,769	13,668	17,214	30,882	14,416	22,224	36,640	6,968	10,924	17,892
Un-known	-	-	-	-	-	-	-	-	-	4,978	675	5,653	13,007	19,965	32,972
Total	262,120	311,974	574,094	443,104	497,923	941,027	634,400	692,396	1,326,796	813,625	867,238	1,680,863	988,958	1,035,946	2,024,904

... Data not available

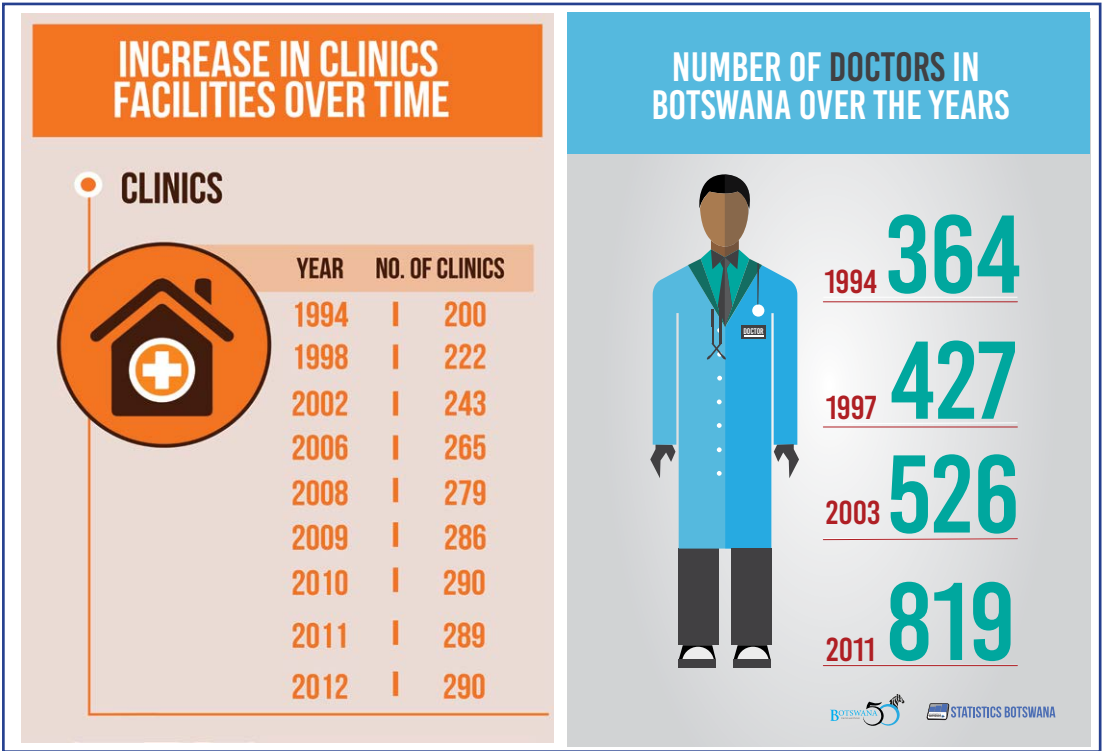
Table 25: Botswana Population Projections (2012 - 2016)

District	2012	2013	2014	2015	2016
Gaborone	237,631	243,453	249,028	254,319	259,291
Francistown	101,105	103,138	105,049	106,823	108,447
Lobatse	28,976	28,884	28,731	28,515	28,235
SelibePhikwe	49,447	49,384	49,219	48,951	48,576
Orapa	9,595	9,643	9,673	9,685	9,678
Jwaneng	18,389	18,750	19,088	19,401	19,687
Sowa Town	3,693	3,758	3,873	3,957	4,035
Southern					
Kanye/Moshupa	131,398	133,376	135,168	136,761	138,138
Barolong	55,837	56,774	57,636	58,416	59,107
Ngwaketse West	14,110	14,522	14,921	15,306	15,674
South East	88,174	91,295	94,361	97,357	100,264
Kweneng					
Kweneng East	265,472	274,039	282,410	290,537	298,372
Kweneng West	48,776	49,698	50,559	51,352	52,072
Kgatleng	94,064	96,382	98,604	100,713	102,697
Central					
Central Serowe	184,213	187,715	190,986	194,001	196,737
Central Mahalapye	120,208	121,356	122,308	123,053	123,580
Central Bobonong	72,680	73,308	73,816	74,196	74,443
Central Boteti	58,629	59,818	60,936	61,975	62,928
Central Tutume	150,586	153,630	156,492	159,152	161,589
North East	61,713	63,100	64,417	65,657	66,810
North West					
Ngamiland East	92,711	95,004	97,201	99,288	101,252
Ngamiland West	63,248	64,475	65,624	66,685	67,652
Chobe	24,017	24,667	25,295	25,896	26,467
Ghanzi					
Ghanzi	44,481	45,839	47,160	48,438	49,664
Kgalagadi					
Kgalagadi South	30,573	31,093	31,571	32,006	32,392
Kgalagadi North	21,051	21,609	22,146	22,660	23,147
Total	2,070,984	2,114,890	2,156,366	2,195,134	2,230,905

Health & Vital Statistics

10

Chart 21: Number of Clinics and Doctors from 1994 to 2011



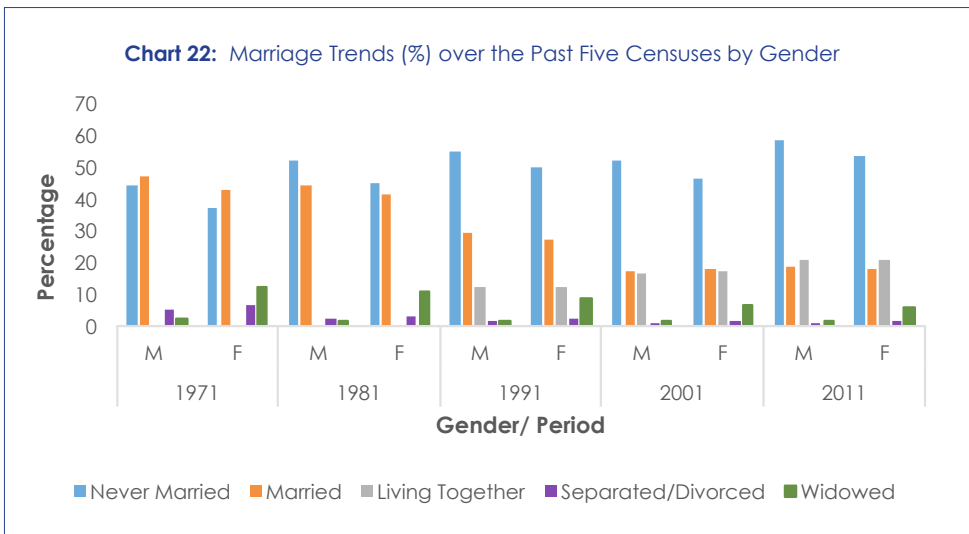


Table 26: Health Facilities 1968-2012

Year	General Hospitals	Clinic	Health posts
1968	12	16	-
1974	11	47	198
1979	13	92	218
1984	14	128	251
1994	29	200	310
1995	30	201	313
1996	30	209	314
1997	30	209	316
1998	30	222	330
1999	31	227	325
2000	33	232	324
2001	33	228	321
2002	33	243	340
2003	35	257	336
2004	35	259	340
2005	35	261	341
2006	35	265	343
2007	35	272	338
2008	35	277	349
2009	35	286	343
2010	35	290	357
2011	35	289	350
2012	35	290	349

.... Data not available

Table 27: Health Personnel 1994-2012

Year	Dentists	Doctors	Nurses
1994	34	364	3,355
1995	40	393	3,678
1996	37	408	3,961
1997	37	424	4,130
1998	31	393	4,265
1999	32	475	4,992
2000	32	465	4,992
2001	38	510	3,994
2002	42	536	4,146
2003	43	526	4,456
2004	13	339	4,211
2005	12	466	4,468
2006	4	591	5,006
2007	32	709	5,765
2008	18	716	5,616
2009	55	819	5,816
2010	55	819	5,816
2011	55	819	5,816
2012	55	819	5,816

Note: 2009-2012; 2009 figures are carried forward

Table 28: Marriage Trends (%) over the Past Five Censuses by Gender

Marital Status	1971		1981		1991		2001		2011	
	M	F	M	F	M	F	M	F	M	F
Never Married	44.0	37.0	51.7	44.5	54.8	49.5	51.7	46.5	58.1	53.4
Married	47.1	42.9	44.4	41.5	29.0	27.2	17.1	17.9	18.8	17.9
Living Together	n/a	n/a	n/a	n/a	12.2	12.0	16.8	17.1	20.6	20.8
Separated/Divorced	5.0	6.6	2.1	3.3	1.7	2.0	1.2	1.8	1.1	1.7
Widowed	2.1	11.9	1.8	11.0	1.5	8.5	1.3	6.5	1.3	6.2

Table 29: Vital Statistics 1971-2011

Population Characteristics	1971	1981	1991	2001	2011
Sex Ratio (Males per 100 Females)	84	89	92	93.8	95.1
Percentage Urban	9	17.7	45.7	54.2	64.1
Population Density (Per km)	1	1.6	2.3	2.9	3.5
Crude Birth Rate (per 1000)	45.3	47.7	39.3	28.9	25.7
Crude Death Rate (per 1000)	13.7	13.9	11.5	12.4	6.25
Natural Rate of Increase (% per annum)	3.1	3.4	2.7	1.7	1.9
General Fertility Rate (per 1000 women aged 15-49)	189	210	161	106.9	92.2
Mean age at child bearing	30.5	30.6	30	30.3	20
Total fertility rate (births per woman)	6.5	6.6	4.2	3.27	2.88
Infant Mortality rate (per 1000 live birth)	97	71	48	56	27
Child Mortality Rate	56	35.01	16.01	19	11
Under 5 mortality	152	105	63.01	74	28.1
Life Expectancy at Birth (Year)	55.5	56.2	65.3	55.6	68
Male	52.5	52.3	63.3	52	66
Female	58.6	59.7	67.1	57.4	70
Mean Age (Years)	23.4	22.7	23	24.8	26.2
Males	22.6	22	22.4	24.2	25.2
Females	24.1	23.4	23.5	25.3	26.8
Median Age (Years)	15	15.3	16.8	20.1	23
Males	13.5	15	16	19.4	22
Females	16.7	16.5	17.4	20.8	24
Population Growth Rate	-	4.7	3.5	2.4	1.9

Table 30: Proportion of Orphans by Census Districts, 2001

District	Total Population	Total Orphans	Percentage of Orphans in District	Percentage Orphans of the Total Population
Gaborone	186,007	6,595	3.5	0.4
Francistown	83,023	4,735	5.7	0.3
Lobatse	29,689	1,496	5	0.1
Selebi Phikwe	49,849	2,572	5.2	0.2
Orapa	9,151	269	2.9	0
Jwaneng	15,179	565	3.7	0
Sowa Town	2,879	131	4.6	0
Ngwaketse	113,704	7,507	6.6	0.4
Barolong	47,477	3,383	7.1	0.2
Ngwaketse West	10,471	704	6.7	0
South East	60,623	3,067	5.1	0.2
Kweneng East	189,773	12,072	6.4	0.7
Kweneng West	40,562	2,592	6.4	0.2
Kgatleng	73,507	4,086	5.6	0.2
Serowe/Palapye	153,035	11,592	7.6	0.7
Central Mahalapye	109,811	8,153	7.4	0.5
Central Bobonong	66,964	5,745	8.6	0.3
Central Boteti	48,057	3,354	7	0.2
Central Tutume	123,514	12,061	9.8	0.7
North East	49,399	4,855	9.8	0.3
Ngamiland East	72,382	5,190	7.2	0.3
Ngamiland West	49,642	4,778	9.6	0.3
Chobe	18,258	1,324	7.3	0.1
Delta	2,688	111	4.1	0
Ghanzi	32,481	2,057	6.3	0.1
C.K.G.R	689	34	4.9	0
Kgalagadi South	25,938	1,543	5.9	0.1
Kgalagadi North	16,111	1,257	7.8	0.1
TOTAL	1,680,863	111,828	6.7	6.7

Table 31: Proportion of Orphans by Census Districts, 2011

District	Total Population	Total Orphans	Percentage of Orphans in District	Percentage Orphans of the Total Population
Gaborone	231,592	6,324	2.7	0.3
Francistown	98,961	4,700	4.7	0.2
Lobatse	29,007	1,520	5.2	0.1
Selebi Phikwe	49,411	2,341	4.7	0.1
Orapa	9,531	182	1.9	0.0
Jwaneng	18,008	553	3.1	0.0
Sowa Town	3,598	215	6.0	0.0
Ngwaketse	129,247	8,914	6.9	0.4
Barolong	54,831	4,206	7.7	0.2
Ngwaketse West	13,689	835	6.1	0.0
South East	85,014	3,630	4.3	0.2
Kweneng East	256,752	13,378	5.2	0.7
Kweneng West	47,797	3,077	6.4	0.2
Kgatleng	91,660	4,415	4.8	0.2
Central Serowe Palapye	180,500	12,743	7.1	0.6
Central Mahalapye	118,875	8,869	7.5	0.4
Central Bobonong	71,936	6,331	8.8	0.3
Central Boteti	57,376	4,510	7.9	0.2
Central Tutume	147,377	13,037	8.8	0.6
North East	60,264	5,357	8.9	0.3
Ngamiland East	90,334	6,172	6.8	0.3
Ngamiland West	59,421	5,086	8.6	0.3
Chobe	23,347	1,328	5.7	0.1
Okavango Delta	2,529	22	0.9	0.0
Ghanzi	43,095	2,686	6.2	0.1
CKGR	260	1	0.4	0.0
Kgalagadi South	30,016	1,789	6.0	0.1
Kgalagadi North	20,476	1,300	6.3	0.1
TOTALS	2,024,904	123,521	6.1	6.1

Education

11

Chart 23: Number of Secondary schools established from 1966 to 2013

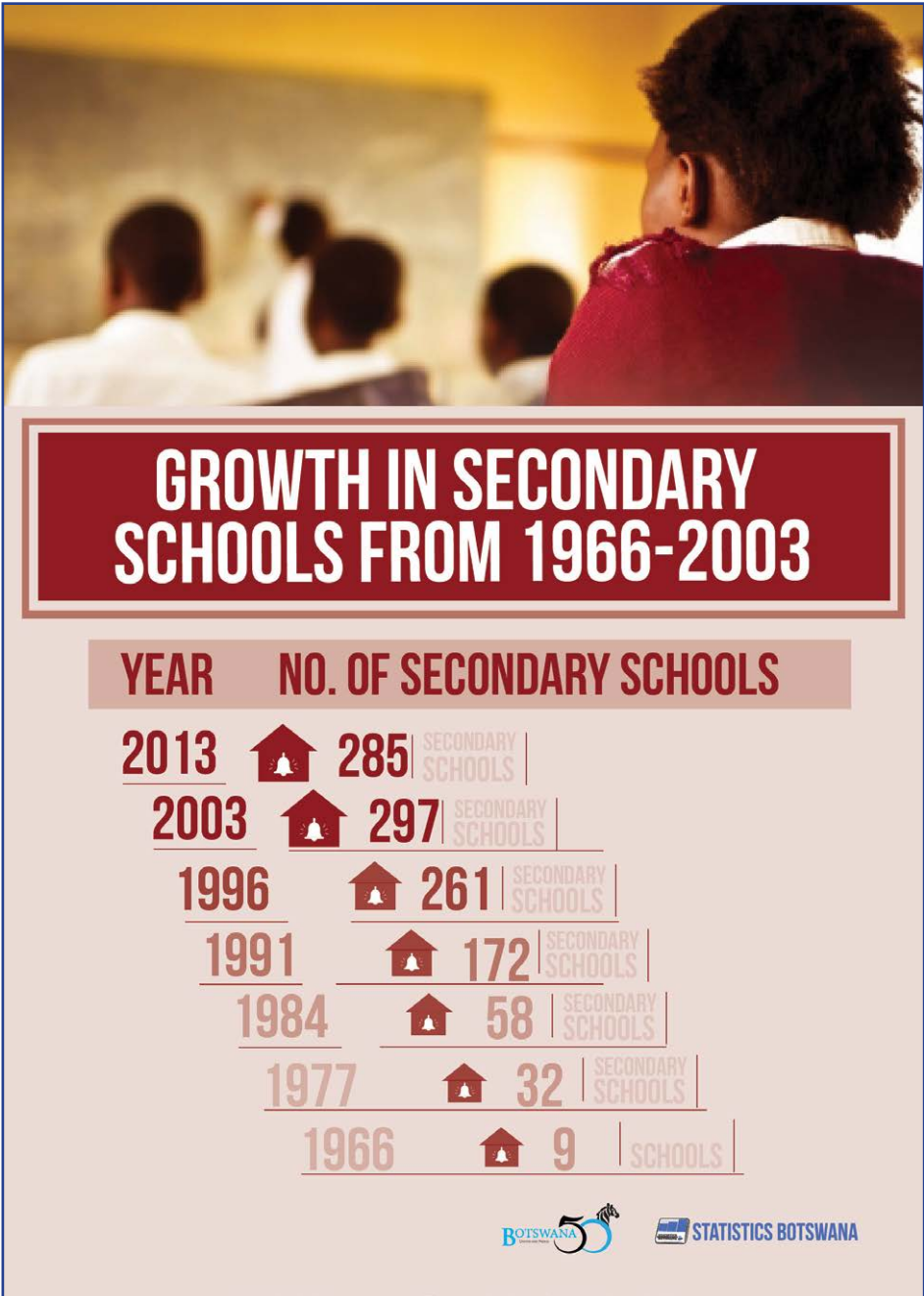


Table 32: School Establishment from 1977-2013

Year	Primary	Secondary	Vocation \ Institution
1977	349	32	26
1978	377	35	22
1979	394	36	22
1980	415	38	23
1981	423	41	24
1982	463	42	24
1983	502	42	26
1984	512	58	23
1985	528	65	26
1986	537	73	25
1987	557	81	25
1988	559	91	27
1989	584	120	27
1990	602	143	29
1991	626	172	31
1992	643	173	31
1993	657	186	31
1994	670	188	31
1995	681	207	46
1996	700	261	44
1997	714	274	46
1998	721	272	46
1999	736	265	46
2000	738	267	50
2001	750	265	50
2002	762	277	49
2003	770	279	51
2004	776	278	51
2005	783	277	51
2006	782	274	49
2007	784	265	43
2008	790	276	43
2009	803	276	-
2010	805	276	-
2011	810	278	-
2012	812	283	-
2013	810	285	-

.... Data not available

Table 33: Number of Teachers/ Lecturers 1977-2013

Year	Primary	Secondary	Vocational
1977	4,495	649	233
1978	4,641	731	340
1979	4,870	778	274
1980	5,316	851	227
1981	5,628	921	236
1982	5,995	985	256
1983	6,360	1,046	255
1984	6,794	1,216	282
1985	6,980	1,462	319
1986	7,324	1,619	353
1987	7,704	1,820	328
1988	8,102	2,004	460
1989	8,529	2,473	481
1990	8,956	3,067	488
1991	9,588	3,763	548
1992	10,409	3,835	534
1993	11,190	4,391	727
1994	11,731	4,712	825
1995	10,792	5,751	966
1996	11,197	6,132	658
1997	11,454	6,772	955
1998	11,654	7,977	1,016
1999	11,950	8,470	1,003
2000	12,135	8,900	1,038
2001	12,370	9,261	1,126
2002	12,531	9,905	1,116
2003	13,153	10,920	1,221
2004	12,717	11,181	1,221
2005	11,534	11,173	1,386
2006	13,012	11,553	1,193
2007	12,989	11,910	992
2008	13,047	12,835	-
2009	13,173	-	-
2010	13,388	-	-
2011	13,509	-	-
2012	14,220	14,141	-
2013	15,042	15,471	-

.... Data not available

Table 34: School Enrolment by Sex 1977- 2013

Year	Primary			Secondary			Vocational		
	Male	Female	Total	Male	Female	Total	Male	Female	Total
1977	61,635	75,655	137,290	6,915	8,410	15,325	1,020	734	1,754
1978	65,211	80,248	145,459	7,105	8,981	16,086	1,082	508	1,590
1979	70,457	86,207	156,664	7,387	9,329	16,716	1,409	697	2,106
1980	78,111	93,803	171,914	8,042	10,283	18,325	1,349	451	1,800
1981	81,975	96,132	178,107	8,909	11,259	20,168	1,171	623	1,794
1982	87,284	100,934	188,218	9,443	11,522	20,965	1,144	486	1,630
1983	92,593	105,735	198,328	10,127	12,125	22,252	1,116	347	1,463
1984	99,005	110,767	209,772	12,553	14,811	27,364	1,685	854	2,539
1985	106,423	117,185	223,608	14,997	17,175	32,172	1,792	992	2,784
1986	113,693	122,248	235,941	17,066	18,900	35,966	1,681	749	2,430
1987	120,196	128,627	248,823	19,022	20,353	39,375	1,770	491	2,261
1988	126,327	135,025	261,352	19,833	20,524	40,357	1,676	838	2,514
1989	133,608	141,829	275,437	23,575	25,773	49,348	2,136	1,007	3,143
1990	137,217	146,299	283,516	26,562	30,330	56,892	2,558	956	3,514
1991	142,117	150,116	292,233	31,607	36,880	68,487	2,474	1,135	3,609
1992	147,414	154,068	301,482	35,146	40,727	75,873	2,730	1,368	4,098
1993	150,751	154,728	305,479	39,882	45,807	85,689	3,263	1,390	4,653
1994	153,789	156,339	310,128	40,989	45,695	86,684	3,814	1,667	5,481
1995	156,560	157,133	313,693	48,212	54,947	103,159	5,563	2,532	8,095
1996	159,502	159,127	318,629	50,666	57,687	108,353	4,351	1,857	6,208
1997	161,497	160,771	322,268	54,525	61,551	116,076	5,598	3,232	8,830
1998	162,565	160,125	322,690	67,695	75,909	143,604	6,226	3,713	9,939
1999	162,124	161,351	323,475	70,375	77,701	148,076	6,178	3,431	9,609
2000	163,192	161,091	324,283	73,044	79,202	152,246	6,775	4,121	10,896
2001	165,932	163,519	329,451	72,981	78,866	151,847	7,092	4,415	11,507
2002	167,246	163,589	330,835	74,373	80,834	155,207	6,728	4,154	10,882
2003	166,973	163,403	330,376	75,252	81,534	156,786	6,882	4,251	11,133
2004	166,759	161,933	328,692	76,405	82,434	158,839	7,885	4,764	12,649
2005	166,903	162,288	329,191	77,094	82,906	160,000	8,556	4,471	13,027
2006	168,152	162,265	330,417	78,864	85,337	164,201	7,698	5,003	12,701
2007	166,987	160,631	327,618	80,911	87,309	168,220	6,305	3,789	10,094
2008	167,058	160,175	327,233	82,758	90,110	172,868	-	-	-
2009	169,513	161,262	330,775	82,646	89,340	171,986	-	-	-
2010	169,556	161,640	331,196	77,094	82,906	160,000	-	-	-
2011	170,221	162,751	332,972	-	-	-	-	-	-
2012	172,347	164,859	337,206	83,426	89,243	172,669	-	-	-
2013	174,015	166,050	340,065	84,860	90,649	175,509	-	-	-

.... Data not available

Table 35: Literacy Rates by Year, Age and Sex (1991-2014), %

Year	10-70			12-70			15 - 65		
	Male	Female	Total	Male	Female	Total	Male	Female	Total
1981	32.0	36.0	34.0
1991	66.8	67.7	67.3
1993	66.9	70.3	68.9
2001	65.0	69.8	67.5	69.9	73.6	71.8
2003	75.3	77.9	76.6	79.6	81.8	80.9	80.4	81.8	81.2
2010	85.1	86.5	85.3	87.4	89.2	88.4	82.3	83.8	83.2
2013	82.6	86.4	84.6	83.8	85.9	84.9	84.1	87.5	85.9
2014	85.7	87.3	86.5	87.3	88.8	88.1	88.7	91.0	90.0

.... Data not available

Labour & Poverty Statistics

12

Chart 24: Unemployment rate during 1981,2004 & 2013 period.

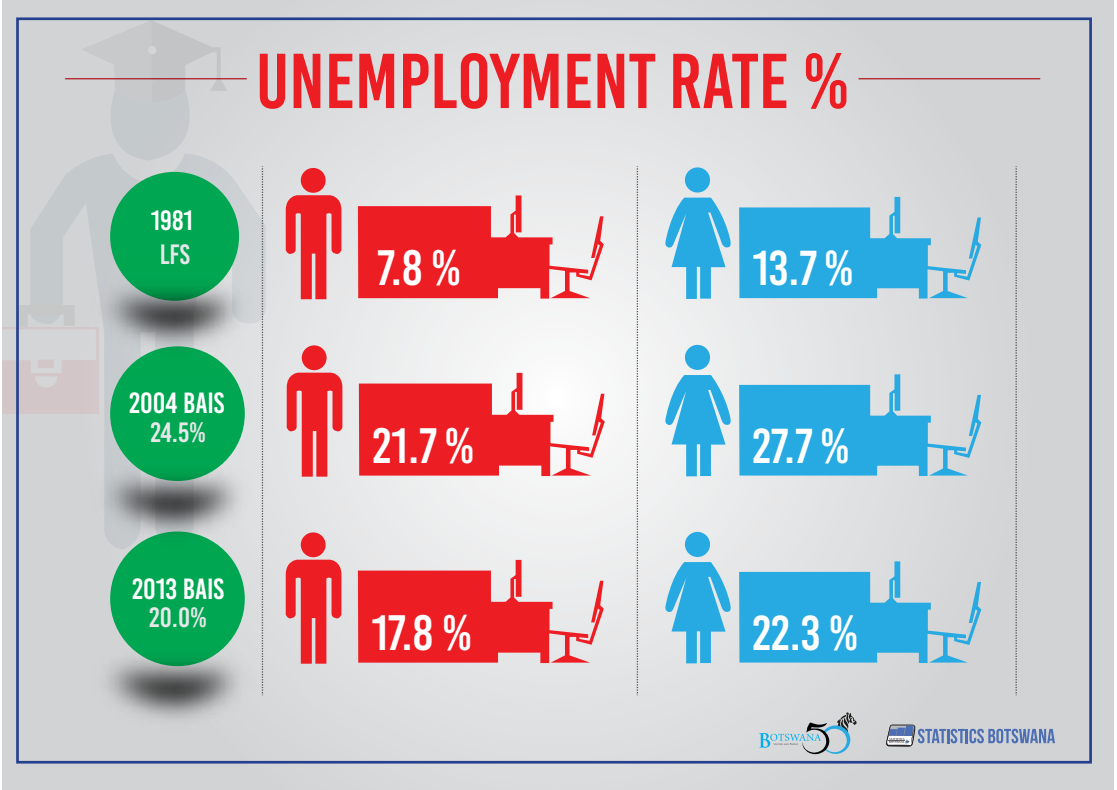


Table 36: Poverty Incidence (Percentage) 1985-2010

	1985/86	1993/94	2002/03	2009/10
National	59.0	47.0	30.6	19.3
Cities & Towns	-	-	10.6	8.0
Urban Villages	19.3	24.3	19.4	19.9
Rural Areas	54.0	40.1	44.8	24.3

.... *Data not available*

Table 37: Trends in Total Labour Force and Unemployment Rate, 1981-2002/03

	Unemployed	Employed	Labour Force	Unemployment Rate %
1981 Census				
Male	14,768	173,549	188,317	7.8
Female	17,458	109,700	127,158	13.7
Aggregate	32,226	283,249	315,475	10.2
1991 Census				
Male	31,852	239,573	271,425	11.7
Female	29,413	140,365	169,778	17.3
Aggregate	61,265	379,938	441,203	13.9
1993/94 Household Income and expenditure Survey (HIES)				
Male	54,959	222,661	277,620	19.8
Female	52,764	169,143	221,907	23.8
Aggregate	107,723	391,804	499,527	21.6
1995/96 Labour Force Survey (LFS)				
Male	45,461	189,301	234,762	19.4
Female	49,067	156,104	205,171	23.9
Aggregate	94,528	345,405	439,933	21.5
1998 Demographic survey (DS)				
Male	56,709	248,913	305,622	18.6
Female	58,994	192,302	251,296	23.5
Aggregate	115,703	441,215	556,918	20.8
2000 Multiple Indicator Survey (MIS)				
Male	46,274	269,425	315,699	14.7
Female	44,455	214,007	258,462	17.2
Aggregate	90,729	483,432	574,161	15.8
2001 Census				
Male	51,916	268,024	319,940	16.2
Female	57,596	185,361	242,957	23.7
Aggregate	109,512	453,385	562,897	19.5
2002/03 Household Income and expenditure Survey (HIES)				
Male	66,880	245,408	312,288	21.4
Female	77,580	216,959	294,539	26.3
Aggregate	144,460	462,366	606,826	23.8

Table 38: Trends in Total Labour Force and Unemployment Rate 2004-2013

	Unemployed	Employed	Labour Force	Unemployment rate %
2004 Botswana AIDS Impact Survey II (BAIS II)				
Male	86,233	259,219	345,452	25.0
Female	99,583	311,110	410,693	24.2
Aggregate	185,816	570,329	756,145	24.6
2005/6 Labour Force Survey (LFS)				
Male	50,833	281,762	332,595	15.3
Female	63,209	257,388	320,597	19.7
Aggregate	114,042	539,150	653,192	17.5
2008 Botswana AIDS Impact Survey III (BAIS III)				
Male	81,630	290,694	372,325	21.9
Female	101,417	223,728	325,148	31.2
Aggregate	183,047	514,422	697,471	26.2
2009/10 Botswana Core Welfare Indicator Survey (BCWS)				
Male	53,704	317,163	370,868	14.5
Female	72,645	267,088	339,733	21.4
Aggregate	126,349	584,251	710,600	17.8
2011 Census				
Male	78,265	363,738	442,003	17.7
Female	81,190	278,327	359,517	22.6
Aggregate	159,455	642,065	801,520	19.9
2013 Botswana AIDS Impact Survey IV (BAIS IV)				
Male	82,835	382,044	464,879	17.8
Female	97,207	338,252	435,459	22.3
Aggregate	180,042	720,296	900,338	20.0

Chart 25: 2001 POPULATION AND HOUSING CENSUS - Trends in Total Labour Force and Unemployment Rate, by Age Group

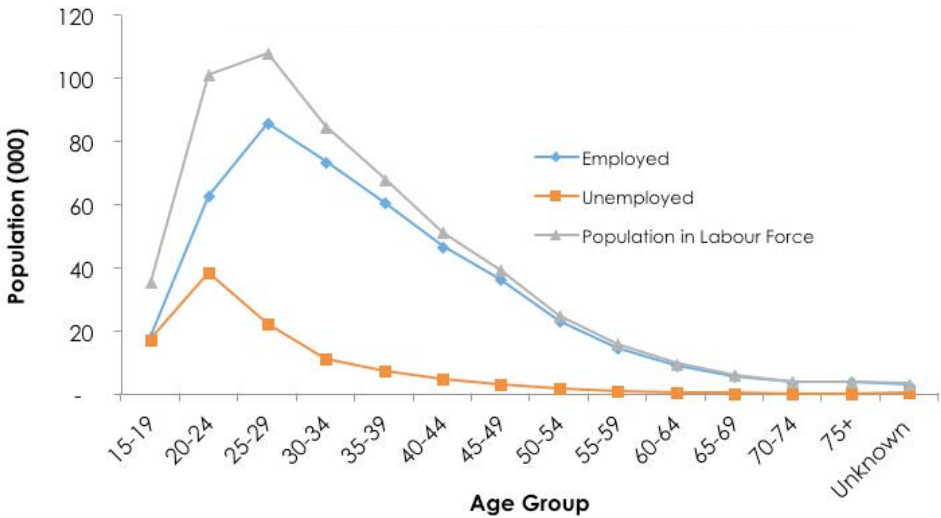


Chart 26: 2011 POPULATION AND HOUSING CENSUS- Trends in Total Labour Force and Unemployment Rate, by Age Group

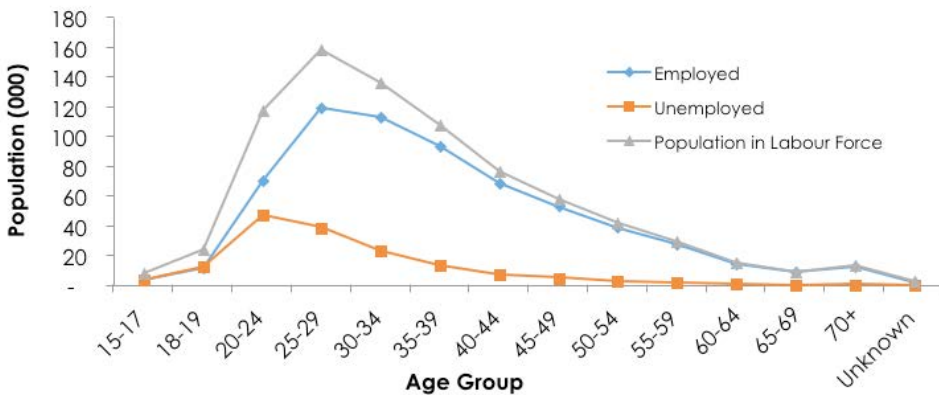


Table 39: 2001 POPULATION AND HOUSING CENSUS- Trends in Total Labour Force and Unemployment Rate, by Age Group

Age Group	Employed			Unemployed			Economically Active			Unemployment Rate (%)		
	Male	Female	Total	Male	Female	Total	Male	Female	Total	Male	Female	Total
15-19	11,538	6,615	18,153	8,227	9,170	17,397	19,765	15,785	35,550	41.6	58.1	48.9
20-24	36,068	26,639	62,707	16,921	21,557	38,478	52,989	48,196	101,185	31.9	44.7	38.0
25-29	49,177	36,563	85,740	9,733	12,473	22,206	58,910	49,036	107,946	16.5	25.4	20.6
30-34	41,809	31,821	73,630	5,171	5,964	11,135	46,980	37,785	84,765	11.0	15.8	13.1
35-39	33,747	26,896	60,643	3,811	3,647	7,458	37,558	30,543	68,101	10.1	11.9	11.0
40-44	26,486	20,283	46,769	2,591	2,044	4,635	29,077	22,327	51,404	8.9	9.2	9.0
45-49	21,587	14,684	36,271	1,905	1,187	3,092	23,492	15,871	39,363	8.1	7.5	7.9
50-54	14,767	8,321	23,088	1,143	510	1,653	15,910	8,831	24,741	7.2	5.8	6.7
55-59	9,761	4,948	14,709	701	293	994	10,462	5,241	15,703	6.7	5.6	6.3
60-64	6,411	2,706	9,117	421	159	580	6,832	2,865	9,697	6.2	5.5	6.0
65-69	4,063	1,670	5,733	221	90	311	4,284	1,760	6,044	5.2	5.1	5.1
70-74	2,613	1,038	3,651	112	61	173	2,725	1,099	3,824	4.1	5.6	4.5
75+	2,765	1,005	3,770	117	107	224	2,882	1,112	3,994	4.1	9.6	5.6
Un-known	2,676	181	2,857	406	24	430	3,082	205	3,287	13.2	11.7	13.1
Total	263,468	183,370	446,838	51,480	57,286	108,766	314,948	240,656	555,604	16.3	23.8	19.6

Table 40: 2002/03 HOUSEHOLD INCOME AND EXPENDITURE SURVEY -Trends in Total Labour Force and Unemployment Rate, by Age Group

Age Group	Employed			Unemployed			Economically Active			Unemployment Rate (%)		
	Male	Female	Total	Male	Female	Total	Male	Female	Total	Male	Female	Total
	15-19	10,563	7,411	17,974	9,844	12,906	22,750	20,407	20,317	40,724	48.2	63.5
20-24	29,728	27,820	57,548	26,808	29,333	56,141	56,536	57,153	113,689	47.4	51.3	49.4
25-29	38,128	38,113	76,241	11,755	17,747	29,502	49,883	55,860	105,743	23.6	31.8	27.9
30-34	35,728	36,435	72,163	7,294	8,065	15,359	43,022	44,500	87,522	17.0	18.1	17.5
35-39	29,157	28,353	57,510	4,379	4,388	8,767	33,536	32,741	66,277	13.1	13.4	13.2
40-44	26,443	24,099	50,542	3,376	2,073	5,449	29,819	26,172	55,991	11.3	7.9	9.7
45-49	20,916	19,104	40,020	1,524	1,642	3,166	22,440	20,746	43,186	6.8	7.9	7.3
50-54	16,150	12,964	29,114	1,176	509	1,685	17,326	13,473	30,799	6.8	3.8	5.5
55-59	12,103	9,111	21,214	361	377	738	12,464	9,488	21,952	2.9	4.0	3.4
60-64	8,979	5,187	14,166	221	283	504	9,200	5,470	14,670	2.4	5.2	3.4
65-69	4,969	4,530	9,499	-	-	-	4,969	4,530	9,499	0.0	0.0	0.0
70-74	4,966	2,046	7,012	-	-	-	4,966	2,046	7,012	0.0	0.0	0.0
75+	5,425	1,720	7,145	71	102	173	5,496	1,822	7,318	1.3	5.6	2.4
Total	243,255	216,893	460,148	66,809	77,425	144,234	310,064	294,318	604,382	21.5	26.3	23.9

... Data not available

Table 41: 2004 BOTSWANA AIDS IMPACT SURVEY II- Trends in Total Labour Force and Unemployment Rate, by Age Group

Age Group	Unemployed			Employed			Economically Active			Unemployment Rate (%)		
	Male	Female	Total	Male	Female	Total	Male	Female	Total	Male	Female	Total
15-19	16,124	18,177	34,301	12,680	9,159	21,839	28,804	27,336	56,140	56.0	66.5	61.1
20-24	27,916	33,787	61,703	41,401	32,102	73,503	69,317	65,889	135,206	40.3	51.3	45.6
25-29	16,386	21,362	37,748	53,396	45,236	98,632	69,782	66,598	136,380	23.5	32.1	27.7
30-34	9,048	10,646	19,694	49,284	40,294	89,578	58,332	50,940	109,272	15.5	20.9	18.0
35-39	4,572	6,175	10,747	36,550	33,832	70,382	41,122	40,007	81,129	11.1	15.4	13.2
40-44	4,155	3,390	7,545	29,442	28,648	58,090	33,597	32,038	65,635	12.4	10.6	11.5
45-49	2,894	2,787	5,681	24,934	21,123	46,057	27,828	23,910	51,738	10.4	11.7	11.0
50-54	1,814	1,065	2,879	19,262	15,027	34,289	21,076	16,092	37,168	8.6	6.6	7.7
55-59	1,432	901	2,333	13,258	13,126	26,384	14,690	14,027	28,717	9.7	6.4	8.1
60-64	527	151	678	8,352	5,886	14,238	8,879	6,037	14,916	5.9	2.5	4.5
65-69	455	275	730	9,880	8,265	18,145	10,335	8,540	18,875	4.4	3.2	3.9
70-74	47	259	306	6,346	2,290	8,636	6,393	2,549	8,942	0.7	10.2	3.4
75+	185	-	185	4,483	3,789	8,272	4,668	3,789	8,457	4.0	-	2.2
Total	85,555	98,975	184,530	309,268	258,777	568,045	394,823	357,752	752,575	21.7	27.7	24.5

.... Data not available

Table 42: 2005/06 LABOUR FORCE SURVEY - Trends in Total Labour Force and Unemployment Rate, by Age Group

Age Group	Employed			Unemployed			Economically Active			Unemployment Rate (%)		
	Male	Female	Total	Male	Female	Total	Male	Female	Total	Male	Female	Total
15-19	19,036	10,542	29,577	5,225	5,524	10,749	24,260	16,066	40,326	21.5	34.4	26.7
20-24	36,872	31,488	68,360	16,177	20,486	36,663	53,049	51,974	105,023	30.5	39.4	34.9
25-29	43,072	40,039	83,111	10,836	13,965	24,801	53,908	54,004	107,912	20.1	25.9	23.0
30-34	38,788	38,425	77,214	4,750	8,506	13,256	43,538	46,931	90,470	10.9	18.1	14.7
35-39	32,328	32,217	64,544	4,099	5,571	9,670	36,427	37,788	74,215	11.3	14.7	13.0
40-44	23,463	28,447	51,910	2,963	4,059	7,023	26,426	32,507	58,933	11.2	12.5	11.9
45-49	23,010	23,628	46,637	2,489	2,705	5,194	25,499	26,333	51,832	9.8	10.3	10.0
50-54	17,475	17,480	34,954	2,120	1,222	3,341	19,594	18,701	38,296	10.8	6.5	8.7
55-60	12,312	11,092	23,404	909	607	1,517	13,221	11,699	24,920	6.9	5.2	6.1
60-64	8,047	6,412	14,459	555	304	859	8,602	6,717	15,318	6.5	4.5	5.6
65+	19,400	12,747	32,148	664	259	923	20,065	13,006	33,071	3.3	2.0	2.8
Not stated	-	-	-	-	-	-	-	-	-	-	0.0	0.0
Total	273,803	252,517	526,318	50,787	63,208	113,996	324,589	315,726	640,316	15.6	20.0	17.8

.... Data not available

Table 43: 2008 BOTSWANA AIDS IMPACT SURVEY - Trends in Total Labour Force and Unemployment Rate, by Age Group

Age Group	Employed			Unemployed			Economically Active			Unemployment Rate (%)		
	Male	Female	Total	Male	Female	Total	Male	Female	Total	Male	Female	Total
15-19	6,964	2,885	9,849	9,665	9,532	19,197	16,629	12,417	29,046	58.1	76.8	66.1
20-24	36,527	24,788	61,315	20,509	30,131	50,640	57,036	54,919	111,955	36.0	54.9	45.2
25-29	56,395	42,888	99,283	19,033	22,681	41,714	75,428	65,569	140,997	25.2	34.6	29.6
30-34	49,714	40,209	89,923	12,401	16,575	28,976	62,115	56,784	118,899	20.0	29.2	24.4
35-39	37,255	33,472	70,727	6,087	9,448	15,535	43,342	42,920	86,262	14.0	22.0	18.0
40-44	31,854	27,283	59,137	4,780	4,444	9,224	36,634	31,727	68,361	13.0	14.0	13.5
45-49	22,356	20,115	42,471	3,500	4,104	7,604	25,856	24,219	50,075	13.5	16.9	15.2
50-54	16,222	13,706	29,928	1,746	1,693	3,439	17,968	15,399	33,367	9.7	11.0	10.3
55-59	11,415	8,452	19,867	1,585	1,053	2,638	13,000	9,505	22,505	12.2	11.1	11.7
60-64	5,257	2,986	8,243	371	286	657	5,628	3,272	8,900	6.6	8.7	7.4
65-69	8,839	4,119	12,958	653	374	1,027	9,492	4,493	13,985	6.9	8.3	7.3
70-74	3,170	1,115	4,285	277	23	300	3,447	1,138	4,585	8.0	2.0	6.5
75-79	2,906	740	3,646	44	0	44	2,950	740	3,690	1.5	0.0	1.2
80+	1,251	725	1,976	177	85	262	1,428	810	2,238	12.4	10.5	11.7
Total	290,125	223,483	513,608	80,828	100,429	181,257	370,953	323,912	694,865	21.8	31.0	26.1

Table 44: 2009/10 BOTSWANA CORE WELFARE INDICATOR SURVEY - Trends in Total Labour Force and Unemployment Rate, by Age Group

Age Group	Employed			Unemployed			Economically Active			Unemployment Rate (%)		
	Male	Female	Total	Male	Female	Total	Male	Female	Total	Male	Female	Total
15-19	12,988	7,768	20,756	6,753	7,939	14,692	19,741	15,707	35,448	34.2	50.5	41.4
20-24	37,260	26,833	64,093	14,360	18,651	33,011	51,620	45,484	97,104	27.8	41.0	34.0
25-29	56,557	43,162	99,719	11,225	17,513	28,738	67,782	60,675	128,457	16.6	28.9	22.4
30-34	47,671	41,226	88,898	8,142	10,385	18,527	55,813	51,611	107,425	14.6	20.1	17.2
35-39	39,873	34,538	74,411	4,981	5,998	10,979	44,854	40,536	85,390	11.1	14.8	12.9
40-44	27,585	30,745	58,329	2,310	4,384	6,694	29,895	35,129	65,023	7.7	12.5	10.3
45-49	24,420	24,314	48,734	2,305	3,076	5,381	26,725	27,390	54,115	8.6	11.2	9.9
50-54	20,908	20,866	41,774	1,526	2,886	4,412	22,434	23,752	46,186	6.8	12.2	9.6
55-59	17,321	13,902	31,223	1,416	856	2,272	18,737	14,758	33,495	7.6	5.8	6.8
60-64	11,501	8,565	20,066	586	636	1,222	12,087	9,201	21,288	4.8	6.9	5.7
65+	17,911	13,515	31,426	37	53	90	17,948	13,568	31,516	0.2	0.4	0.3
Total	313,995	265,434	579,429	53,641	72,377	126,018	367,636	337,811	705,447	14.6	21.4	17.9

Table 45: 2011 POPULATION AND HOUSING CENSUS - Trends in Total Labour Force and Unemployment Rate, by Age Group

Age Group	Employed			Unemployed			Economically Active			Unemployment Rate (%)		
	Male	Female	Total	Male	Female	Total	Male	Female	Total	Male	Female	Total
	15-17	2,837	1,245	4,082	2,130	1,809	3,939	4,967	3,054	8,021	42.9	59.2
18-19	7,176	4,445	11,621	6,543	6,417	12,960	13,719	10,862	24,581	47.7	59.1	52.7
20-24	41,797	28,831	70,628	22,286	24,989	47,275	64,083	53,820	117,903	34.8	46.4	40.1
25-29	66,667	53,009	119,676	18,117	20,755	38,872	84,784	73,764	158,548	21.4	28.1	24.5
30-34	63,007	50,287	113,294	10,920	12,092	23,012	73,927	62,379	136,306	14.8	19.4	16.9
35-39	53,059	41,055	94,114	7,090	6,831	13,921	60,149	47,886	108,035	11.8	14.3	12.9
40-44	38,016	30,940	68,956	4,066	3,393	7,459	42,082	34,333	76,415	9.7	9.9	9.8
45-49	28,619	24,705	53,324	2,840	2,197	5,037	31,459	26,902	58,361	9.0	8.2	8.6
50-54	21,262	17,923	39,185	1,699	1,089	2,788	22,961	19,012	41,973	7.4	5.7	6.6
55-59	16,142	12,059	28,201	1,058	663	1,721	17,200	12,722	29,922	6.2	5.2	5.8
60-64	9,222	5,606	14,828	587	316	903	9,809	5,922	15,731	6.0	5.3	5.7
65-69	5,833	3,233	9,066	244	163	407	6,077	3,396	9,473	4.0	4.8	4.3
70+	8,564	4,251	12,815	316	347	663	8,880	4,598	13,478	3.6	7.5	4.9
Unknown	1,537	738	2,275	368	128	496	1,905	866	2,771	19.3	14.8	17.9
Total	363,738	278,327	642,065	78,264	81,189	159,453	442,002	359,516	801,518	17.7	22.6	19.9

Table 46: 2013 BOTSWANA AIDS IMPACT SURVEY - Trends in Total Labour Force and Unemployment Rate, by Age Group

Age Group	Employed			Unemployed			Economically Active			Unemployment Rate (%)		
	Male	Female	Total	Male	Female	Total	Male	Female	Total	Male	Female	Total
15-17	4,326	2,987	7,314	1,092	2,986	4,078	5,418	5,973	11,392	20.2	50.0	35.8
18-19	6,038	6,336	12,374	8,739	8,361	17,100	14,777	14,697	29,474	59.1	56.9	58.0
20-24	49,263	32,786	82,049	22,563	29,125	51,688	71,826	61,911	133,737	31.4	47.0	38.6
25-29	61,631	50,563	112,194	17,356	22,361	39,717	78,987	72,924	151,910	22.0	30.7	26.1
30-34	64,439	53,243	117,682	10,787	16,452	27,239	75,226	69,695	144,921	14.3	23.6	18.8
35-39	48,760	47,631	96,391	6,807	7,392	14,199	55,567	55,023	110,590	12.2	13.4	12.8
40-44	40,099	39,365	79,465	5,695	3,927	9,622	45,795	43,292	89,087	12.4	9.1	10.8
45-49	26,251	29,299	55,551	4,385	4,404	8,788	30,636	33,703	64,339	14.3	13.1	13.7
50-54	23,012	25,828	48,840	2,565	1,022	3,588	25,577	26,850	52,428	10.0	3.8	6.8
55-59	22,856	20,924	43,780	2,098	535	2,633	24,954	21,459	46,413	8.4	2.5	5.7
60-64	13,711	12,148	25,859	748	276	1,024	14,459	12,424	26,883	5.2	2.2	3.8
65-69	9,476	9,001	18,476	-	365	365	9,476	9,366	18,842	-	3.9	1.9
70+	12,181	8,141	20,322	-	-	-	12,181	8,141	20,322	-	-	-
Total	382,044	338,252	720,296	82,835	97,207	180,041	464,879	435,458	900,337	17.8	22.3	20.0

